

Selling 90 Purebred Simmental Bulls



PROUDLY HOSTING OUR 45TH ANNUAL SALE!

HART SIMMENTALS POWER BULL SALE

*Thursday, February 6, 2020 • 12:00 Noon Sharp
At the farm 2 miles south of Frederick, SD*

**ONE
OF THE
COUNTRY'S
LARGEST
SELECTIONS
OF PUREBRED
BULLS!**

45th Annual Hart Simmentals Power Bull Sale!

WELCOME FROM THE WHOLE GANG HERE AT HART SIMMENTALS – YOUR PREMIERE BREEDER OF THE LARGEST SELECTION OF PUREBRED AND HOMO POLLED SIMMENTAL BULLS!



We are pleased to welcome you, the cattle enthusiasts, family, friends and neighbors to our 45th annual bull sale! Our "Hart's" are full of so many things to be thankful for and to be here with all of you as we celebrate life!! Thankful for our wonderful customers, who are the very reason that we are here now, doing exactly what we love to do, which is to raise great cattle and present them to you for your approval.

Thankful and blessed that we will be adding to our genetic pool with the announcement of Travis and Shelby's birth of their first little one and also that Kerry and I are here and get to be a part of that! Grandkids truly make life grand!

No one said that farming and ranching was easy and we certainly don't expect it to fall right into your lap, but heaven help us all, the devastation and destruction that has occurred in 2019 needs to cease and desist immediately. Our hearts go to each and every single one of you that has been affected by one way or the other from the incredible amounts of snow we received and stuck around until June, which made our pastures unable to green up when we needed them to. The dam and levees washing millions and millions of gallons of water into the heartland of our nation, leaving thousands of people wondering what they are going to do and where do we turn to. The indescribable amount of mud from all of the snow and water in which we had to calf in and try and plant a crop in, try and make hay in, try and chop silage in, try and harvest what crop you were able to get in. So now we have gotten rid of 2019 and have said hello to 2020 in the hopes everything will turn around and go in the proper direction. But as the saying goes, "the show must go on", so we trudge forward into the unknown and into the upcoming calving season with a renewed spirit as it is one of our most favorite times of the year!

Our breeding program will remain for the most part unchanged and we will keep on striving towards the very best genetics that can be attained. We have a tried, tested and proven method that is your guide in helping you in selecting an individual that will best suit your demanding needs and cattle program. Our all video sale will also be in place for your ease of purchase, plus the bulls will be penned the day prior to the sale and also on the day of the sale. We highly encourage you to insure your purchase to better protect your investment. If we have learned one thing from the last couple years, is that there is never enough protection. This is a fabulous product and they have the very best team of agents to make sure that it all runs smoothly.

Please stop by at any given time of the year if you are in the area, we will be more than tickled to show you the cattle whenever and wherever and remember our door is always open and the coffee is always on,

Sincerely,
**The Hart Family: Kerry & Mara
Justin, Jes, Braelyn, Zoie, Jaxin
Travis, Shelby and Baby "H" and Jamie**



Scan this code into your smart phone to view catalog online

OR type in this link:
<http://edjesales.com/eberspacher/hart/index.html>

Sale Terms & Conditions:

- 1) All cattle will sell under the terms and conditions adopted by the American Simmental Association.
- 2) We guarantee our cattle to be breeders but reserve the right to test any animal that may be returned to us as a non-breeder for one hundred eighty (180) days before making an adjustment. Cattle will be returned at the buyer's expense, and if declared a sound breeder by a competent veterinarian the cattle will be returned to the buyer's ranch at the buyer's expense. In case an adjustment is required, we will provide you with a satisfactory replacement (if available) or issue you a credit equal to the bull's purchase price minus the salvage value of \$1,000.
- 3) Any death or injury after the animal is sold is at the buyer's risk.
- 4) Anyone attending this sale attends at their own risk. The Hart's or any of the sale force will not be held responsible for any personal injury while attending this sale.

This sale will be broadcast live on the internet!

DVAuction
Broadcasting Real-Time Auctions

Justin Dikoff 605-290-0635

45th
Annual
Sale



ONE OF THE COUNTRY'S LARGEST SELECTIONS OF PUREBRED
BULLS! 96% OF OFFERING IS HOMOZYGOUS POLLED!

Selling 90 PB SM Herd Bull Prospects

Complete performance data & 50K testing
on all bulls offered in the 2020 sale.

Sale Day Phones:

Kerry 605-252-2065 • Val 612-805-7405

Justin 605-216-6469 • Travis 605-252-0894

SCHEDULE:

Wednesday, February 5th. Viewing of Sale Cattle at the Farm

Farm address: 10904 387th Avenue, Frederick, SD 57441

Thursday, February 6th

8:00 a.m. Viewing of Cattle

11:00 a.m. Complimentary Lunch

12:00 Noon. 45th Annual Hart Simmentals Power Bull Sale

AIR TRANSPORTATION: Delta Airlines serves Aberdeen from all directions.
Please contact Hart Simmentals prior to sale day for assistance with
transportation.

AREA MOTELS: Aberdeen, S.D. has several excellent motels

Ramkota Inn, Sale Headquarters	605-229-4040
Hampton Inn, Aberdeen SD	605-262-2600
Holiday Inn Express & Suites.	605-725-4000
Super 8 North.	605-226-2288

LIVESTOCK PRESS REPRESENTATIVES & MARKETING REPRESENTATIVES:

Val Eberspacher, EE Sales	612-805-7405
Donnie Leddy, Cattle Business Weekly.	605-695-0113
Chris Effling	605-769-0142
Ben Spitzer, ASA Field Representative	864-723-3779

AUCTIONEER:

Col. Jared Shipman 806-983-7226

FREE DELIVERY ANYWHERE ON ALL BULLS PURCHASED OVER \$5,000!

Delivery starting February 20th. Or, we can keep the bulls until April 30 and the
buyer will be responsible for pick up. \$50 off per head if you haul your bull sale day.

★ **HART SIMMENTALS** ★

Kerry, Mara, Justin, Jes, Travis, Shelby & Jamie

4hooves@nvc.net

Kerry 605-252-2065 • Justin 605-216-6469

Travis 605-252-0894

Bull Sale

Thursday, February 6, 2020
at 12:00 Noon Sharp!

Sale will be held at the farm
2 miles south of Frederick, SD
VIDEO SALE ONLY - bulls will be
penned for viewing at the farm
prior to and on sale day!

General Information

Health: We at Hart Simmental have a complete herd health program which is managed by Dr. Tim Kruse and the Wetonka Vet Clinic. All bulls will be accompanied by health papers for shipment anywhere in the United States. They have been vaccinated for Rednose, P13, BVD, 7-way clostridial, Blackleg, BRSV, Haemophilus, and have had their booster shot at weaning. They have also been dewormed with Safeguard and poured with Ivomec. Dams of all bulls have been tested John's free.

Genetic Defects: All bulls selling are Arthrogyrosis Multiplex (AM) Free, Neuropathic Hydrocephalus (NH) Free, and Contractural Arachnodactyly (CA) Free.

Delivery: FREE DELIVERY anywhere on bulls purchased over \$5,000. We will start delivery February 20 or we can keep the bulls until April 30. Any bull left here until April 30 must be picked up by the purchaser by that date. No exceptions. \$50 off per head if you haul your bull sale day.

Performance Information: All performance information will be posted on sale day for your inspection. Yearling Weights and Weight Per Day of Age will be available on all bulls selling sale day, and will be posted on the internet sale site as soon as complete.

Volume Discount: There will be a volume discount given if you purchase 3 bulls, the discount will be 3%. 4 bulls will have a 4% discount and 5 or more bulls will be a 5% discount.

Livestock Insurance: Insurance will be available sale day through Martin-Trudeau Insurance who offers loss of use and mortality. In no case will seller be responsible for more than the purchase price of the bull and details will be available through the agents on sale day. *If you intend on leaving your bulls at the ranch we highly recommend you insure your bull or bulls to better protect your investment.*

EPDs: Please note the EPDs may change from the time the sale catalog is printed until registration paper is transferred. Simmental EPDs are BOLT 12-31-19 numbers.
All bulls have been tested for Genomic Enhanced EPDs.

Announcements: Announcements made sale day and from the auction block during the sale take precedence over printed material in the catalog or other printed material associated with this sale.

Sale Managed by:

Val & Lori Eberspacher

Eberspacher

ENTERPRISES INC.

Office 507-532-6694

Cell 612-805-7405

sales@ebersale.com

Catalog Online at
www.ebersale.com



Sons of HSR Power Plus D206

Black Dbl Polled 3/4 SM 1/4 AN ASA#3201850 Tattoo: D206 Birth: 3-20-16

TJ Power Grid 363Y x HSR Ms. Rookie Z751

EPDs																
CE	BW	WW	YW	ADG	MCE	MM	MWW	STAY	DOC	CWT	YG	MARB	BF	REA	API	TI
11	3.1	96	155	.37	9	24	72	21	10.4	69.3	-.22	-.10	-.058	.99	125	77

Power Plus is a TJ Power Grid 363Y son that is certainly living up to his name as he just keeps improving those tremendous traits that transfer down into his sons and daughters. His tremendous depth of rib, extreme muscle definition, overall added dimension and unique functionality are the reason why his calves explode with superior growth and weaning weights that are a key component for any cattle breeding program! Therefore, his bull calves are soft, easy fleshing, early maturing herd bulls that are out of a huge variety of significant females and stayed precisely on point and consistently cranking out huge gaining bulls with that extra push at the scales. That's why they keep popping up to the top of our sales and are admired as standouts with many prominent industry leaders.



Val

LOT
1

Hart Powerhouse 074G

Homozygous Black Dbl. Polled Purebred
ASA#3570908 Tattoo: 074G Birth: 2-1-19
Act. BW: 85 Adj. WW: 866 WW Ratio: 115



EPDs																
CE	BW	WW	YW	ADG	MCE	MM	MWW	STAY	DOC	CWT	YG	MARB	BF	REA	API	TI
7	3.2	95	145	.32	5	27	75	19	11.1	67.5	-.26	-.014	-.084	.91	123	79
Rank		1	1	1		10	1	25		1						10

HSR Power Plus D206

Hart Miss 155A

TJ Power Grid 363Y

HSR Ms. Rookie Z751

WLB Roughneck 366R 377W

Hart Miss Club King W585

Hart Double Shot 096E,
Maternal Brother

- AI Power Plus herd bull prospect with a super weaning weight of 866 and a weaning weight ratio of 115.
- 1% in WW, 1% in YW, 1% in ADG, 1% in MWW, 1% in CW, 10% in MILK, 10% in TI.
- Parks himself in the elite group of bulls to sell.
- Stemming from one of the most idealistic young females with a perfect udder on the farm.
- Dam is our favorite WLB Roughneck 366R 377W female and boasts some impressive EPD data with a WW Ratio of 5@112, and is the dam of Hart Double Shot 096E selling to Kukla Farms and Hart 096C selling to Keith Giesler.



Hart Assault 059A

Black Homozygous Polled Purebred

ASA#3570778 Tattoo: 059G Birth: 1-31-19
Act. BW: 87 Adj. WW: 802 WW Ratio: 107

EPDs																
CE	BW	WW	YW	ADG	MCE	MM	MWW	STAY	DOC	CWT	YG	MARB	BF	REA	API	TI
8	3.9	94	144	.31	6	21	68	21	11.2	61.8	-.35	-.07	-.089	1.06	131	79
Rank		1	1	2	35	3		10	1					10	35	10

HSR Power Plus D206

TJ Power Grid 363Y

Hart Miss 024D

HSR Ms. Rookie Z751
Welsh's Warsaw 312Z
Hart Miss 212B

- All bull calf boasting another weaning weight above 800 lbs and a WW Ratio of 107.
- 1% in WW, 1% in YW, 2% in ADG, 3% in MWW, 1% in CW, 10% in STAY, 10% in REA, 10% in TI.
- Dam is a Welsh's Warsaw daughter known for producing progeny with ideal birth to weaning curve.
- Produced 1 replacement female working hard in our herd.



Hart Milo 211A

Homozygous Black Homozygous Polled Purebred

ASA#3570850 Tattoo: 211G Birth: 3-6-19
Act. BW: 83 Adj. WW: 915 WW Ratio: 122

EPDs																
CE	BW	WW	YW	ADG	MCE	MM	MWW	STAY	DOC	CWT	YG	MARB	BF	REA	API	TI
9	2.7	83	133	.31	7	32	74	17	10.7	52.4	-.28	-.06	-.086	.77	124	76
Rank		5	2	2	25	1		1				1				20

TJ Power Grid 363Y

HSR Power Plus D206

HSR Ms. Rookie Z751

Hart In Time W095

Hart Miss 106Y

Hart Miss Club King W414

- Power Plus son that has the 2nd most impressive weaning weight of the bulls at 915 lbs. and a weaning weight ratio-122, Ranks 5th out of 214 bulls.
- 5% in WW, 2% in YW, 2% in ADG, 1% in MILK, 1% in MWW, 1% in CW.
- Another Power Plus big time herd prospect that is built to easily convert forage and maintain efficiency in a very challenging environment.
- His Hart In Time W095 dam is also a top notch female that weighs high with WW Ratio of 6@111, selling Hart Golden Boy 196F to Backer Farms and Hart Custer 095E selling to Shoanka Farms and Hart Simmentals.



Hart Custer 095E, Maternal Brother



Hart 084A

Black Dbl. Polled Purebred

ASA#3570808 Tattoo: 084G Birth: 2-2-19
Act. BW: 90 Adj. WW: 792 WW Ratio: 105

HSR Power Plus D206

TJ Power Grid 363Y

Hart Miss 055C

HSR Ms. Rookie Z751

JF Rancher 222Z

Hart Miss 362Y

EPDs																
CE	BW	WW	YW	ADG	MCE	MM	MWW	STAY	DOC	CWT	YG	MARB	BF	REA	API	TI
9	3.0	83	128	.28	7	27	68	19	13.5	49.3	-.28	-.06	-.074	.81	125	74
Rank		5	4	10	25	15	3	30	15	1				25		

- All herd bull prospect out of Power Plus that also has an almost 800 lb weaning weight of 792 lbs. and a WW Ratio of 105.
- 5% in WW, 4% in YW, 3% in MWW, 1% in CW, 10% in ADG, 15% in DOC, 15% in MILK.
- A very young Rancher daughter that has some high expectations with a WW Ratio of 3@105. Hart 071E to Steve Stoddard, and produced a Replacement female.



Hart 071E,
Maternal Brother



Hart 301A

Heterozygous Black Homozygous Polled Purebred
 ASA#3571092 Tattoo: 301G Birth: 3-15-19
 Act. BW: 83 Adj. WW: 757 WW Ratio: 101

EPDs																
CE	BW	WW	YW	ADG	MCE	MM	MWW	STAY	DOC	CWT	YG	MARB	BF	REA	API	TI
12	1.7	83	129	.28	8	20	61	22	9.2	38.9	-36	-.01	-.085	.84	141	77
Rank																
30		5	3	10	10		20	2		10					15	15



TJ Power Grid 363Y
HSR Power Plus D206
HSR Ms. Rookie Z751
Mr. NLC Upgrade U8676
Kappes Sadie S518 Z365
Kappes Sadie S518

- A very young Power Plus bull calf that has a ton of potential and has held strong with some of his earlier brothers that are in the sale. Love to see what he looks like when it comes to turn out time! WW of 757 and a WW Ratio of 101.
- 5% in WW, 3% in YW, 10% in ADG, 10% in MCE, 2% in STAY, 10% in CW, 15% in API, 15% in TI.
- Kappes Sadie Z365 is a replacement dam factory! Reproducing 5 replacement females and has had her first taste of what producing a bull calf feels like!



Hart 054A

Homozygous Black Dbl. Polled Purebred
 ASA#3571099 Tattoo: 054G Birth: 1-30-19
 Act. BW: 74 Adj. WW: 812 WW Ratio: 108

EPDs																
CE	BW	WW	YW	ADG	MCE	MM	MWW	STAY	DOC	CWT	YG	MARB	BF	REA	API	TI
15	1.8	75	118	.27	10	28	65.3	20.3	9.6	45.1	-.29	.03	-.090	.66	140	74
Rank																
5		25	15	10	2	10	10	10		3					15	25



TJ Power Grid 363Y
HSR Power Plus D206
HSR Ms. Rookie Z751
Hart Black Label U009
Hart Miss Z374
Hart Gold Mine Lass U137

- Another big time AI Power Plus bull calf that cracked out a WW of 812 lbs. with a WW Ratio of 108.
- 5% in CE, 15% in YW, 10% in ADG, 2% in MCE, 10% in MILK, 10% in MWW, 10% in STAY, 3% in CW, 15% in API - this bull is in the top 15% for 9 categories - impressive!
- Extensive birth weight to weaning weight spread!!!
- Hart Miss X374 out of Hart Black Label U009 has a perfect udder and has a long list of attributes that puts into the top elite cows at Hart Simmentals - with a BW Ratio-8@105, WW Ratio-8@105- Hart Long Range 047F sold to Shannon Brown; Hart 198E to Wilbur Albrecht; Hart 109D to Steve Stoddard; Hart 160C to Todd O'Bryan.



Hart 109D,
Maternal Brother



Hart 160C,
Maternal Brother



Hart Long Range 047F,
Maternal Brother



Hart Fire Power 102A

Homozygous Black Dbl. Polled Purebred
 ASA#3571111 Tattoo: 102G Birth: 2-5-19
 Act. BW: 90 Adj. WW: 900 WW Ratio: 120



EPDs																
CE	BW	WW	YW	ADG	MCE	MM	MWW	STAY	DOC	CWT	YG	MARB	BF	REA	API	TI
10	3.7	88	137	.30	8	31	75	20	11.2	57.7	-30	-15	-0.86	.90	124	75
Rank														35	20	



Hart 142E, Maternal Brother



Hart 215B, Maternal Brother

HSR Power Plus D206 TJ Power Grid 363Y
Hart Miss X390 HSR Ms. Rookie Z751
 SAS T101 Sweet Meat
 Hart Lady Nasdaq R719

- AI herd bull prospect with an impressive Weaning Weight of 900 lbs. and a WW Ratio of 120, 9th highest weaning weight of the entire offering and out of 214 bulls.
- 2% in WW, 1% in YW, 2% in ADG, 2% in MILK, 1% in MWW, 1% in CW, 15% in MCE, 15% in STAY, 20% in STAY.
- Super deep middled, soft easy fleshing, and added dimension.
- SAS Sweet Meat X390 dam is a staple here at Hart Simmentals and always hits. She has a WW Ratio of 8@105 and has produced her own lineup of standout bulls sold at our sales including Hart 142E sold to Steve Stoddard; Hart Paradise 235C sold to Pischel Simmentals; and Hart 215B sold to Keith Giesler.



Hart Paradise 235C, Maternal Brother



Hart 197A

Black Homozygous Polled Purebred
 ASA#3571142 Tattoo: 197G Birth: 3-4-19
 Act. BW: 87 Adj. WW: 869 WW Ratio: 115

EPDs																											
CE	BW	WW	YW	ADG	MCE	MM	MWW	STAY	DOC	CWT	YG	MARB	BF	REA	API	TI											
9	4.0	86	130	.27	6	27	70	24	11.0	49.9	-32	-0.02	-0.81	.90	137	76											
Rank																	3	3	10	35	10	1	1	1	35	20	20



TJ Power Grid 363Y
HSR Power Plus D206
HSR Ms. Rookie Z751
SAS Big Impact
Hart Lady Impact W490
Hart Miss Lewy S483

- This Power Plus brute that is extra deep, that is long as a truck and has a dominant weaning weight of 869 with a WW Ratio of 115.
- 3% in WW, 3% in YW, 10% in ADG, 10% in MILK, 1% in MWW, 1% in STAY, 1% in CW.
- Another big impact female that has hit on all cylinders with a WW Ratio of 8@105, Hart All Impact 257D selling to Beitelspacher Farms and producing 5 replacement females that have done great work.



Hart 086A

Black Homozygous Polled Purebred
 ASA#3570997 Tattoo: 086G Birth: 2-2-19
 Act. BW: 87 Adj. WW: 730 WW Ratio: 97

EPDs																							
CE	BW	WW	YW	ADG	MCE	MM	MWW	STAY	DOC	CWT	YG	MARB	BF	REA	API	TI							
9	3.1	83	131	.30	6	22	63	18	11.1	58.9	-37	-0.08	-0.95	1.05	123	74							
Rank																	5	3	2	10	1	10	25

HSR Power Plus D206 TJ Power Grid 363Y
Hart Miss 244B HSR Ms. Rookie Z751
 ASR Final Sort X0151
 Hart Miss X481

- Another AI son from Power Plus that has a moderate stature with a WW of 730.
- 5% in WW, 3% in YW, 2% in ADG, 10% in MWW, 1% in CW, 10% in REA.
- His Final Sort dam has produced 1 replacement female.





Hart Nitro 119E,
Maternal Brother



Hart 335A

Black Homozygous Polled Purebred

ASA#3571127 Tattoo: 335G Birth: 3-20-19
Act. BW: 90 Adj. WW: 869 WW Ratio: 115



EPDs																
CE	BW	WW	YW	ADG	MCE	MM	MWW	STAY	DOC	CWT	YG	MARB	BF	REA	API	TI
5	3.7	86	134	.30	4	23	66	17	10.0	60.5	-.32	-.15	-.081	1.01	111	72
Rank		3	2	2	5			1			15			35		

HSR Power Plus D206

TJ Power Grid 363Y

Hart Lady In Time W419

HSR Ms. Rookie Z751

Dillons In Time

Hart Ms. Royal Flush T312

- Long spined, big tanky son of Power Plus that pushed the scale down at 869 and captures maximum performance with a WW Ratio of 115.
- 3% in WW, 2% in YW, 2% in ADG, 5% in MWW, 1% in CW, 15% in REA.
- Lady In Time female that shows how these Hart females produce top progeny year after year. She has a WW Ratio of 9@100. Hart Nitro 119E selling to Steve Stoddard, Hart 204D to Lon Craig, Hart 106A going to Shannon Gartner and putting 3 banner replacement females back into our herd.



Hart 188A

Black Homozygous Polled Purebred

ASA#3571044 Tattoo: 188G Birth: 3-2-19
Act. BW: 90 Adj. WW: 835 WW Ratio: 111

HSR Power Plus D206

TJ Power Grid 363Y

HSR Ms. Rookie Z751

Hart Lady Impact U305

SAS Big Time Impact

Hart Lady Locator P583

EPDs																
CE	BW	WW	YW	ADG	MCE	MM	MWW	STAY	DOC	CWT	YG	MARB	BF	REA	API	TI
5	4.2	85	130	.28	4	25	68	19	9.4	53.3	-.32	-.14	-.088	.87	115	71
Rank		3	3	10	20			3			25			1		

- These Power Plus bull calves are no joke, another big producing heavy weaning weight bull at 835 lbs and has a WW Ratio of 111.
- 3% in WW, 3% in YW, 10% in ADG, 20% in MILK, 3% in MWW, 1% in CW.
- A Big Impact female that has flat out produced for us. Hart 147C Kevin and John Horihan; Hart Low Impact 329Z Tim Kessler and put 4 fantastic replacement females to work at our pastures.



Hart 100A

Homozygous Black Homozygous Polled Purebred

ASA#3571184 Tattoo: 100G Birth: 2-5-19
Act. BW: 92 Adj. WW: 743 WW Ratio: 99

HSR Power Plus D206

TJ Power Grid 363Y

HSR Ms. Rookie Z751

Hart Ms. Crossfire U650

JBS Mr. Crossfire 701R

Hart Lady Express K371

EPDs																
CE	BW	WW	YW	ADG	MCE	MM	MWW	STAY	DOC	CWT	YG	MARB	BF	REA	API	TI
10	3.0	76	116	.25	7	27	65	22	8.6	34.6	-.35	-.06	-.091	.70	130	70
Rank		20	15	20	20	15	10	1	25			35				

- All bull calf from Power Plus that is a bit more moderate with a very uniform package, has a WW of 743 lbs and a WW Ratio of 100.
- 20% in WW, 15% in YW, 20% in ADG, 20% in MCE, 15% in MILK, 10% in MWW, 1% in Stay.
- Crossfire dam produced Hart 069F to Rodney West; Hart 259D to Maurie Larsen and also produced 5 steller females making great sons and daughters.



Hart 271A

Homozygous Black Homozygous Polled Purebred

ASA#3570786 Tattoo: 271G Birth: 3-11-19
Act. BW: 87 Adj. WW: 747 WW Ratio: 99

HSR Power Plus D206

TJ Power Grid 363Y

HSR Ms. Rookie Z751

Hart Miss 030D

RS&T Shocking Rare A310

Hart Miss 102B

EPDs																
CE	BW	WW	YW	ADG	MCE	MM	MWW	STAY	DOC	CWT	YG	MARB	BF	REA	API	TI
12	3.0	84	130	.29	9	26	68	18	10.9	39.0	-.35	-.15	-.087	.79	123	73
Rank		30	4	3	4	10	20	3	10			30				

- Power Plus' all come with the same package, long vigorous calves that grow at extreme rates to meet producers demands. He has a weaning weight of 747 lb. for this mid March bull and a WW Ratio of 100.
- 4% in WW, 3% in YW, 4% in ADG, 10% in MCE, 20% in MILK, 3% in MWW, 10% in CW.
- Very young RS&T Shocking Rare dam that shows she is right for the job. WW Ratio 2@104.



This sale will be broadcast live on the internet! **DVAuction** Broadcasting Real-Time Auctions

We hope to see you February 6th!



Hart 336A

Black Homozygous Polled Purebred

ASA#3570872 Tattoo: 336G Birth: 3-20-19
Act. BW: 85 Adj. WW: 779 WW Ratio: 104

HSR Power Plus D206

TJ Power Grid 363Y

Hart Miss 122A

HSR Ms. Rookie Z751

OBCC King Pin W42Y

Hart Miss X484

EPDs																
CE	BW	WW	YW	ADG	MCE	MM	MWW	STAY	DOC	CWT	YG	MARB	BF	REA	API	TI
14	2.1	82	129	.29	9	21	62	18	10.7	50.9	-.23	-.10	-.084	.59	129	74
Rank																
10	10	3	4	5		15			1							25

- Another text book Power Plus bull calf that has that patterned look that Power Plus puts into all his progeny, has a WW of 779 and a WW Ratio of 104.
- 10% in CE, 10% in WW, 3 %in YW, 4% in ADG, 5% in MCE, 15% in MWW, 1% in CW.
- A King Pin daughter that has her first bull this year, she has given us 4 top notch females to work in our herd.



Hart 265A

Black Homozygous Polled Purebred

ASA#3570868 Tattoo: 265G Birth: 3-11-19
Act. BW: 74 Adj. WW: 756 WW Ratio: 100

HSR Power Plus D206

TJ Power Grid 363Y

Hart Miss 119A

HSR Ms. Rookie Z751

Hart Eclipse 510Y

Hart Miss Big Stuff N393

EPDs																
CE	BW	WW	YW	ADG	MCE	MM	MWW	STAY	DOC	CWT	YG	MARB	BF	REA	API	TI
10	2.7	85	133	.30	8	20	62	21	12.0	64.1	-.37	-.11	-.088	1.16	129	74
Rank																
	3	2	2	15		15	10	30	1					3	35	25

- Soggy made, low set Power Plus son, easy fleshing with added barrel and stoutness. WW of 756 and a WW Ratio of 100.
- 3% in WW, 2% in YW, 2% in ADG, 15% in MCE, 15% in MWW, 10% in STAY, 1% in CW, 3% in REA.
- His dam is one of our favorite Hart Eclipse 510Y daughters, they really put some extra flashiness, really smooth muscle development, and just that extra eye appeal. Hart Commander 052F to Schneider Ranch and 2 fancy replacement females back into the herd.



Hart 231A

Black Dbl. Polled Purebred

ASA#3571191 Tattoo: 231G Birth: 3-8-19
Act. BW: 87 Adj. WW: 841 WW Ratio: 112

HSR Power Plus D206

TJ Power Grid 363Y

Hart Miss X690

HSR Ms. Rookie Z751

OLF Wiseguy S599

Hart Miss Four Lane R268

EPDs																
CE	BW	WW	YW	ADG	MCE	MM	MWW	STAY	DOC	CWT	YG	MARB	BF	REA	API	TI
9	2.3	80	126	.29	7	29	68	19	11.5	53.9	-.36	-.16	-.072	1.12	121	72
Rank																
	10	4	4	20	10	2	30	35	1					5		35

- A top shelf young Power Plus son that has garnished his fair share of interest that boasts an ideal birth to weaning curve. He pushes the scale down at 841 lbs for weaning weight and has a WW Ratio of 112.
- 10% in WW, 4% in YW, 4% ADG, 10% MILK, 2% MWW, 1% CW, 5% REA.
- OLF Wiseguy dam that really puts everything she has into her calves. She boasts a WW Ratio of 8@105. Hart 161C sold to Greg Heyne; Hart 223B to Giese Farms and produced 4 stellar replacement females working in our herd.

Purebred Simmental Percentile Table

%	API	TI	CE	BW	WW	PWG	YW	MCE	MLK	MWW	STY	DOC	CWT	YG	MRB	BF	REA	SF
1	158.57	85.63	17.10	-2.50	89.30	0.31	136.10	10.40	32.00	69.90	22.30	17.00	48.60	-0.60	0.41	-0.15	1.22	-0.51
2	153.89	83.39	16.10	-1.80	86.20	0.29	131.00	9.70	30.60	68.10	21.70	16.10	45.60	-0.59	0.35	-0.14	1.17	-0.49
3	150.85	82.11	15.40	-1.50	84.40	0.29	128.20	9.30	29.70	67.10	21.40	15.60	44.10	-0.58	0.32	-0.14	1.14	-0.47
4	148.60	81.14	15.00	-1.20	83.10	0.28	126.00	9.00	29.00	66.20	21.10	15.20	42.90	-0.57	0.30	-0.14	1.12	-0.46
5	146.66	80.33	14.70	-1.00	82.20	0.28	124.50	8.80	28.50	65.60	20.90	14.90	41.90	-0.56	0.28	-0.14	1.10	-0.45
10	141.26	77.70	13.60	-0.30	78.90	0.26	119.30	7.90	26.90	63.20	20.20	13.80	38.70	-0.54	0.21	-0.13	1.03	-0.42
15	137.72	76.03	12.80	0.20	76.80	0.25	115.70	7.40	25.80	61.70	19.70	13.10	36.70	-0.53	0.17	-0.13	0.99	-0.40
20	134.97	74.62	12.30	0.50	75.00	0.24	112.90	7.00	25.00	60.50	19.30	12.60	35.00	-0.51	0.13	-0.12	0.95	-0.39
25	132.73	73.46	11.80	0.80	73.60	0.23	110.40	6.60	24.30	59.50	19.00	12.20	33.70	-0.50	0.11	-0.12	0.93	-0.37
30	130.70	72.43	11.40	1.00	72.30	0.23	108.20	6.30	23.70	58.60	18.60	11.80	32.50	-0.49	0.08	-0.12	0.90	-0.36
35	128.83	71.48	11.00	1.20	71.10	0.22	106.20	6.00	23.10	57.80	18.30	11.40	31.40	-0.49	0.06	-0.12	0.88	-0.35
40	127.04	70.58	10.60	1.40	70.00	0.21	104.30	5.70	22.60	57.00	18.00	11.10	30.30	-0.48	0.05	-0.12	0.86	-0.34
45	125.39	69.77	10.30	1.60	68.90	0.21	102.50	5.50	22.10	56.30	17.70	10.80	29.30	-0.47	0.03	-0.11	0.84	-0.33
50	123.77	68.93	10.00	1.80	67.80	0.20	100.60	5.20	21.60	55.60	17.40	10.50	28.30	-0.46	0.01	-0.11	0.82	-0.33
55	122.22	68.14	9.60	2.00	66.80	0.20	98.70	4.90	21.10	54.80	17.10	10.20	27.30	-0.45	0.00	-0.11	0.80	-0.32
60	120.65	67.34	9.30	2.20	65.70	0.19	97.00	4.70	20.60	54.10	16.80	9.90	26.30	-0.44	-0.02	-0.11	0.79	-0.31
65	119.01	66.48	8.90	2.30	64.70	0.19	95.10	4.40	20.10	53.30	16.50	9.50	25.30	-0.43	-0.03	-0.10	0.76	-0.30
70	117.31	65.64	8.50	2.50	63.60	0.18	93.20	4.10	19.60	52.60	16.10	9.20	24.30	-0.42	-0.05	-0.10	0.75	-0.29
75	115.46	64.73	8.10	2.80	62.50	0.18	91.10	3.80	19.10	51.70	15.70	8.70	23.20	-0.41	-0.06	-0.10	0.72	-0.28
80	113.37	63.67	7.60	3.00	61.20	0.17	89.00	3.40	18.50	50.90	15.30	8.30	22.00	-0.40	-0.08	-0.09	0.70	-0.27
85	111.00	62.51	7.00	3.30	59.80	0.16	86.70	3.00	17.80	49.90	14.70	7.70	20.50	-0.39	-0.11	-0.09	0.67	-0.25
90	107.98	61.15	6.20	3.70	58.00	0.15	83.70	2.50	16.90	48.80	14.00	6.80	18.60	-0.37	-0.13	-0.08	0.63	-0.24
95	102.95	59.27	5.10	4.30	55.10	0.14	78.80	1.70	15.60	47.20	13.00	5.10	15.60	-0.34	-0.17	-0.08	0.58	-0.21
Avg	123.77	68.93	10.00	1.80	67.80	0.20	100.60	5.20	21.60	55.60	17.40	10.50	28.30	-0.46	0.01	-0.11	0.82	-0.33



Sons of BBS True Justice B10

Homo Black Homo Polled Purebred ASA#2878160 Tattoo: B10 Birth: 2-23-14
BDV True Grit 11X x BBS Miss Justice Z7

EPDs																
CE	BW	WW	YW	ADG	MCE	MM	MWW	STAY	DOC	CWT	YG	MARB	BF	REA	API	TI
12	.9	80	123	.27	8	35	75	20	12.4	28.7	-.60	.15	-.133	1.07	146	83

True Justice is a BVD True Grit 11X son who has become one of the breed's top most used #1 calving ease sires in the line up at Genex Coop. He offers unmatched calving ease, streamline build, eye appealing muscle design that is combined with a fault free structure that is setting the standards at the top of the industries categories. The True Justice calves are very easy to spot no matter where they are in our pens or pastures due to their supreme depth of rib, massive rear flank and fantastic leg bone and big hooves. The True Justice heifers that are calving here are having an earlier gestation length, supreme ease of calving, and are some of the most docile females to calf out. It has been a privilege and gives us great pleasure to be able to view the progeny out of standouts such as Hart Prime 017E, who topped our 2018 bull sale to Emmons Black Simmentals and Hart Weaver 088E to Todd O'Bryan and are producing impressive sons and daughters that top the markets time and time again!



Hart 122F, Maternal Brother

LOT 17

Hart Iron Clad 097G

Homozygous Black Snip Homozygous Polled Purebred
 ASA#3570934 Tattoo: 097G Birth: 2-4-19
 Act. BW: 83 Adj. WW: 839 WW Ratio: 112

EPDs																
CE	BW	WW	YW	ADG	MCE	MM	MWW	STAY	DOC	CWT	YG	MARB	BF	REA	API	TI
6	2.8	83	127	.28	3	30	72	20	14.1	43.5	-.53	.02	-.119	1.15	129	77
Rank		5	4	10	3	1	15	10	4	20				3	35	15

BBS True Justice B10

Hart Miss 188D

BDV True Grit 11X
BBS Miss Justice Z7
SVF Z47 Patch
Hart Miss 503Y



- This AI homo black and homo polled son of True Justice has an impressive ideal birth to weaning curve and is soggy made, easy fleshing with maximum performance! He has a Weaning Weight of 839 and a WW Ratio of 112.
- 5% in WW, 4% in YW, 10% in ADG, 3% in MILK, 1% in MWW, 15% in STAY, 10% in DOC, 4% in CW, 3% in REA, 15% in TI. Very consistent of the True Justice calves and in the top 15% in 10 categories.
- This 2nd year Patch dam doesn't leave anything to chance, she delivers on all levels and will definitely be a staple for our herd in the years to come. She has put forth a WW Ratio of 2@110 and her Trademark son from last year went to Greg Heyne.



Hart Gladiator 101A

Homozygous Black Homozygous Polled Purebred

ASA#3570886 Tattoo: 101G Birth: 2-5-19
Act. BW: 85 Adj. WW: 898 WW Ratio: 119

EPDs																
CE	BW	WW	YW	ADG	MCE	MM	MWW	STAY	DOC	CWT	YG	MARB	BF	REA	API	TI
11	1.4	87	133	.28	6	27	70	17	13.0	53.7	-0.45	.15	-.110	1.12	140	85
Rank		2	2	10	35	15	1		20	1		20		5	15	2

- BDV True Grit 11X
- BBS True Justice B10
- BBS Miss Justice Z7
- WS All-Around Z35
- Hart Miss 136D
- Hart Miss 403Y



- A super impressive True Justice son that ranks himself in the elite group of bulls being offered who excels in curve bending moderate birth weight and a very impressive weaning weight of 898 lbs, just a little shy of 900 and has a WW Ratio of 119. Ranks 11th out of 214 bulls. Here is your chance to grab some of the most elite genetics in the industry!
- Superb easy fleshing that is sound made with exceptional foot and bone structure.
- Very indicative of the power of True Justice as this herd sire prospect tops 9 of the progressive trait categories of our breed - 2% in WW, 2% in YW, 10% in ADG, 15% in MILK, 1% in MWW, 1% in CW, 5% in REA, 15% in API, 2% in TI - just flat out impressive.

• Hart Miss 136D is a second year producer out of WS All-Around Z35 that is a front pasture dam with a track record to match and has a WW Ratio of 2@116, and her Blackstone bull, Hart Granite 039F went to 1 Bar Ranch of Tom and Amy Murphy and the winner of the 2019 heifer give away, Congrats!



Hart 020A

Homozygous Black Homozygous Polled Purebred

ASA#3570866 Tattoo: 020G Birth: 1-19-19
Act. BW: 78 Adj. WW: 849 WW Ratio: 113

EPDs																
CE	BW	WW	YW	ADG	MCE	MM	MWW	STAY	DOC	CWT	YG	MARB	BF	REA	API	TI
11	2.4	88	137	.31	6	26	70	17	11.5	45.7	-0.48	-.02	-.109	1.12	130	81
Rank		2	1	2	30	15	1		35	2				5	35	5



- BDV True Grit 11X
- BBS True Justice B10
- BBS Miss Justice Z7
- GLS Integrate Z3
- Hart Miss 117E
- Hart Ms. Direct Force W408

- TJ son that is long spined, smooth muscled and boasts an impressive weaning weight of 849 and a WW Ratio of 113 and a very modest birth weight, just what is needed to meet producers demands.
- These True Justice calves are hitting the top of charts with excellent data, 2% in WW, 1% in YW, 2% in ADG, 15% in MILK, 1% in MWW, 2% in CW, 5% in REA, 5% in TI.
- Very impressive first calf heifer out of Integrate that absolutely stacked the deck a herd bull prospect with maximum performance that has the same demographics as the group of Justice calf offered and that grow at extreme rates. Her grandam is still in production here and has herself an impressive stack of EPDs and a bomb of a El Dorado son in the sale.



LOT 20

Hart 016A

Homozygous Black Homozygous Polled Purebred

ASA#3570968 Tattoo: 016G Birth: 1-18-19
Act. BW: 80 Adj. WW: 815 WW Ratio: 108

EPDs																
CE	BW	WW	YW	ADG	MCE	MM	MWW	STAY	DOC	CWT	YG	MARB	BF	REA	API	TI
12	1.6	83	125	.26	7	28	69	19	11.9	33.5	-.62	.10	-.140	1.16	142	82
Rank																
20	5	5	15	20	10	2	30	30	30	30	1	30	10	3	10	3

BBS True Justice B10

Hart Miss 213E

BDV True Grit 11X

BBS Miss Justice Z7
BBS True Justice B10
Hart Miss 220B

HOMOZYGOUS
BLK

HOMOZYGOUS
PLD

- Another over 800lb AI whopper out of True Justice that is soggy made, easy fleshing, added extra depth of rib and with extreme muscle definition. He sports an impressive 815 weaning weight and a WW Ratio of 108.
- Double Bred True Justice insures that this bull would be a game changer in the calving ease department.

LOT 21

Hart 015A

Homozygous Black Homozygous Polled Purebred

ASA#3571067 Tattoo: 015G Birth: 1-18-19
Act. BW: 83 Adj. WW: 850 WW Ratio: 113

EPDs																
CE	BW	WW	YW	ADG	MCE	MM	MWW	STAY	DOC	CWT	YG	MARB	BF	REA	API	TI
10	3.5	84	132	.30	6	32	73	14	9.9	56.6	-.58	-.02	-.135	1.36	119	78
Rank																
		4	2	2	35	2	1			1	4		10	1		15

BBS True Justice B10

Hart Miss 333E

BDV True Grit 11X

BBS Miss Justice Z7

JBS Single Shot 601C

Hart Ms. Royalflush U527

HOMOZYGOUS
BLK

HOMOZYGOUS
PLD

- A fault free, TJ son stacked to the brim with all the right pieces to the puzzle that will produce top notch cattle. He has a scale crushing weaning weight of 850 and WW Ratio of 113.
- The proof in not only just on paper, which this Justice son is definitely a chart topper in many of the EPD categories- 4% in WW, 2% in YW, 2% in ADG, 2% in MILK, 1% in MWW, 1% in CW, 4% in YG, 10% in BF, 1% in REA, 15% in TI, but they surely also show it in their maximum power.
- We have yet another first calf heifer taking care of business and putting it all into her baby, she is a Single Shot daughter that will be one of those females that you can't wait to see what she does next. Her Royal Flush grandam is extremely maternal and has produced 8 super solid replacement females that reserve the right to be in the top of our cow herd and expect Hart Miss 333E will out produce her someday!

This sale will be broadcast live on the internet! **DVAuction** Broadcasting Real-Time Auctions

LOT 22

Hart 056A

Homozygous Black Homozygous Polled Purebred
 ASA#3571060 Tattoo: 056G Birth: 1-30-19
 Act. BW: 83 Adj. WW: 882 WW Ratio: 117

EPDs																									
CE	BW	WW	YW	ADG	MCE	MM	MWW	STAY	DOC	CWT	YG	MARB	BF	REA	API	TI									
9	1.7	84	129	.28	6	32	74	18	11.2	44.7	-53	.13	-.142	.97	137	83									
Rank														4	3	10	2	1	3	20	25	2	20	20	3



BDV True Grit 11X
BBS True Justice B10
BBS Miss Justice Z7
WS All-Around Z35
Hart Miss 326D
Hart Ms. Royalflush U355

- This True Justice son is so jammed full of muscle mass that showcases his awesome weaning weight of 882 lb. and a steller WW Ratio of 117. Ranks 15 out of 214 Bulls.
- 4% in WW, 3% in YW, 10% in ADG, 2% in MILK, 1% in MWW, 3% in CW, 2% in BF, 3% in TI, another impressive TJ son that leaves it all on the table.
- This young WS All-Around Z35 daughter has started her production out right on the money with a WW Ratio of 2@115. Her first bull calf also started off in the right direction with a WW of 851, but is one of the bulls that got hurt badly in one of the blizzards last year and couldn't come back from it.

LOT 23

Hart 114A

Homozygous Black Homozygous Polled Purebred
 ASA#3571126 Tattoo: 114G Birth: 2-6-19
 Act. BW: 87 Adj. WW: 778 WW Ratio: 103

EPDs																								
CE	BW	WW	YW	ADG	MCE	MM	MWW	STAY	DOC	CWT	YG	MARB	BF	REA	API	TI								
6	2.7	75	116	.25	4	30	67	18	9.2	23.4	-63	.12	-.140	1.06	129	76								
Rank														20	20	20	4	4	1	25	10	10	35	20



BDV True Grit 11X
BBS True Justice B10
BBS Miss Justice Z7
JHNS Black Edge 126U
Hart Miss 416Z
Hart Stubby Cindy U666

- TJ son that is maybe a hair more moderate than the rest of the bulls in this group but he is no less stout or soggy. His dam is a little more on the moderate side as well so it only shows that she can produce a solid calf that has a weaning weight of 778 and a WW Ratio of 103.
- 4% in MILK, 4% in MWW, 1% in YG, 10% in BF, 10% in REA.
- His Black Edge dam is a "Z" model that has a more maternal pallet as she has produced 3 replacement females and has a WW Ratio of 5@104.

Sons of Rubys Turnpike 771E

Homo. Black Homo. Polled Purebred ASA#3282048 Tattoo: 771E Birth: 1-31-17
WBF Significant B132 x Rubys Miss Cleo 240Z

EPDs																
CE	BW	WW	YW	ADG	MCE	MM	MWW	STAY	DOC	CWT	YG	MARB	BF	REA	API	TI
9	4.4	96	148	.33	5	18	66	14	13.3	50.1	-.53	.07	-.126	1.19	127	84

We believe that we have brought to the table some of the finest genetics for our 2020, 45th annual bull sale! Our union of Turnpike and Hart Emily 077A turned a calf crop into a Yatzee! These 6 full embryo brothers and 2 AI sons take center stage and have turned Hart genetics up full tilt and not are they only frontrunners in terms of their explosive data, but are even more exciting in person and will be highly sought after the day of our sale. They combine superior framework, extensive big bodies and are super dense in their feet and leg structure! We predict that anyone of these 9 Turnpike bulls will be game changing in any cattle program, anywhere!



LOT 24

Hart Turnout 127A

Homozygous Black Homozygous Polled Purebred
 ASA#3570848 Tattoo: 127G Birth: 2-8-19
 Act. BW: 90 Adj. WW: 891 WW Ratio: 118

EPDs																
CE	BW	WW	YW	ADG	MCE	MM	MWW	STAY	DOC	CWT	YG	MARB	BF	REA	API	TI
8	4.0	94	147	.33	5	23	70	18	13.5	49.2	-.58	-.06	-.143	1.21	126	81
Rank		1	1	1			2		15	1	4		2	2		5

Rubys Turnpike 771E **WBF Significant B132**
 Rubys Miss Cleo 240Z
Hart Miss 102A **SKORS Black Enticer 287Y**
 Hart Miss X534

- This Turnpike AI son is out of our very favorite Enticer female and showed up at the farm already with every bell and whistle they have out there! His almost 900 lb. weaning weight of 891 lbs. sets the bar high along with his WW Ratio of 118. Ranks 13 out of 214 Bulls.
- He is a maternal brother to Hart State Of War 056C, who resides up in Canada at McMillen Ranching LTD and Semex Alliance and one of Hart Simmentals newest calving ease super sires.
- 1% in WW, 1% in YW, 1% in ADG, 2% in MWW, 1% in CW, 4% in YG, 2% in BF, 2% in REA, 5% in TI-You are going to want to sit up and take notice in his impressive credentials!
- Hart Miss 102A isn't just a flash in the pan, she has consistently given our program the foot up with the newest and latest in genetics. She boasts an impressive WW Ratio of 4@104, and YW Ratio of 3@106.





LOT 25

Hart Turnstone 124A

Homozygous Black HOMOZYGOUS Polled Purebred

ASA#3570978 Tattoo: 124G Birth: 2-8-19
Act. BW: 83 Adj. WW: 842 WW Ratio: 112

EPDs																
CE	BW	WW	YW	ADG	MCE	MM	MWW	STAY	DOC	CWT	YG	MARB	BF	REA	API	TI
8	3.9	93	140	.29	5	25	71	16	12.9	38.9	-.48	-.01	-.129	.86	125	81
Rank		1	1	4		25	1		20	10			20			5

Rubys Turnpike 771E WBF Significant B132
 Rubys Miss Cleo 240Z
 Hart Miss 227D WS All-Around Z35
 Hart Miss Power Drive 88H

- Not sure if it was the stars aligning or karma or fate have you, but we were unbelievably blessed with two of the most completely uniform, superbly blessed maternal brothers to be born on the same day and out of completely different females. They are two peas in a pod! Turnstone stamped out an impressive 842 lb weaning weight and a WW Ratio of 112.
- 1% in WW, 1% in YW, 4% in ADG, 1% in MWW, 10% in CW, 5% in TI
- This 2nd year calver out of WS All-Around really packed a wallop into her bull calf with a WW Ratio of 2@109, his maternal brother Hart 013F went to Maurie Larsen.

LOT 26

Hart Turn Buckle 090A

Homozygous Black HOMOZYGOUS Polled Purebred

ASA#3570970 Tattoo: 090G Birth: 2-3-19
Act. BW: 85 Adj. WW: 807 WW Ratio: 107

EPDs																
CE	BW	WW	YW	ADG	MCE	MM	MWW	STAY	DOC	CWT	YG	MARB	BF	REA	API	TI
10	4.4	90	139	.31	6	26	71	18	12.4	39.8	-.56	-.12	-.127	1.16	122	77
Rank		1	1	2		20	1		25	10	10		20	3		15

Rubys Turnpike 771E WBF Significant B132
 Rubys Miss Cleo 240Z
 Hart Miss 217D BBS True Justice B10
 Hart Miss Mack T331

- AI bull that certainly captures your eye and comes with the same package of his other maternal brothers with a weaning weight of 807 lb. and a WW Ratio of 107.
- 1% in WW, 1% in YW, 2% in ADG, 1% in MWW, 10% in CW, 10% in YG, 3% in REA, 15% in TI - another Turnpike with tremendous data!
- Another very young BBS True Justice female trying to hit it in the big time and we think she may have made it with her Turnpike bull calf as she has a WW Ratio of 2@110 - Hart Blackout 024F Steve Stoddard.

This sale will be broadcast live on the internet! **DVAuction** Broadcasting Real-Time Auctions

We hope to see you February 6th!

LOT 27

Hart Turnt' Up 217A

Homozygous Black Homozygous Polled Purebred
 ASA#3570751 Tattoo: 217G Birth: 3-7-19
 Act. BW: 87 ET Adj. WW: 918 WW Ratio: N/A

EPDs																
CE	BW	WW	YW	ADG	MCE	MM	MWW	STAY	DOC	CWT	YG	MARB	BF	REA	API	TI
15	2.5	81	127	.29	8	27	67	18	9.8	27.5	-.48	-.01	-.119	.81	135	77
Rank																
10		10	4	4	10	10	3								25	15



HOMOZYGOUS BLK
HOMOZYGOUS PLD

Pedigree for Lots 28-33:
WBF Significant B132
Rubys Turnpike 771E
Rubys Miss Cleo 240Z
OBCC King Pin W42Y
Hart Emily 077A
Hart Miss C69Z

• This unique set of purebred flush brothers out of Turnpike and all come with the same dynamic package that have grown at extreme rates and are soggy made, with an ideal birth to weaning curve, capturing maximum performance. Each individual has a little something about each of them that sets them apart, but so uniform in their makeup and just the right combination of power and style! Hart Emily 077A went into our donor program and is an impressive cow with many accomplishments listed in her track record with a natural BW Ratio of 3@101, and a natural WW Ratio of 3@108. Hart 344E Wagner Ranch, and Hart War Fare 091C to Stacey Freicks. There are 9 superior Turnpike bulls offered which averaged 832 lbs. weaning weight, now that is performance!!



LOT 28

Hart Nocturnal 250A

Homozygous Black Homozygous Polled Purebred
 ASA#3570755 Tattoo: 250G Birth: 3-10-19
 Act. BW: 83 ET Adj. WW: 819 WW Ratio: N/A

EPDs																
CE	BW	WW	YW	ADG	MCE	MM	MWW	STAY	DOC	CWT	YG	MARB	BF	REA	API	TI
12	3.4	85	132	.30	6	25	67	18	10.8	48.5	-.54	-.05	-.124	1.23	130	77
Rank																
30		3	2	2		25	3	35		2	15		20	1	35	15

HOMOZYGOUS PLD **HOMOZYGOUS BLK**

LOT 29

Hart Upturn 260A

Homozygous Black Homozygous Polled Purebred
 ASA#3570757 Tattoo: 260G Birth: 3-10-19
 Act. BW: 85 ET Adj. WW: 825 WW Ratio: N/A

EPDs																
CE	BW	WW	YW	ADG	MCE	MM	MWW	STAY	DOC	CWT	YG	MARB	BF	REA	API	TI
11	3.2	86	135	.30	5	23	66	17	8.6	46.0	-.51	.10	-.11	1.20	136	81
Rank																
		3	2	2				10		2	25	30		2	20	5

HOMOZYGOUS PLD **HOMOZYGOUS BLK**

LOT 30

Hart Nonreturnabull 304A

Homozygous Black Homozygous Polled Purebred
 ASA#3570759 Tattoo: 304G Birth: 3-15-19
 Act. BW: 85 ET Adj. WW: 817 WW Ratio: N/A

EPDs																
CE	BW	WW	YW	ADG	MCE	MM	MWW	STAY	DOC	CWT	YG	MARB	BF	REA	API	TI
9	3.4	86	134	.30	4	21	64	17	8.3	48.6	-.49	.12	-.110	1.18	133	81
Rank																
		3	2	2				10		2		25		2	25	5

HOMOZYGOUS PLD **HOMOZYGOUS BLK**

Sons of DCR Mr. Exclusive E28

Black Homo. Polled Purebred ASA#3320938 Tattoo: E28 Birth: 2-9-17
Kuntz Sheriff 8A x KLSR Miss United C501

EPDs																
CE	BW	WW	YW	ADG	MCE	MM	MWW	STAY	DOC	CWT	YG	MARB	BF	REA	API	TI
12	1.3	96	148	.33	8	19	67	16	10.3	48.3	-.37	-.13	-.108	.82	128	83

There are some things in life that do not seem fair. We had a huge opportunity with our purchase of Exclusive and were extremely excited to see what was to come in the near future. Unfortunately, he became sick at the collection place and we had to say goodbye to him, but by a strange turn of events we were blessed with a one time collection that yielded us with a wonderful set of herd bull prospects and replacement females. He is a purebred, homo polled son of Kuntz Sheriff A8 that has a WW Ratio of a 107 and a 887 205 day weight with tremendous depth of rib, smooth linear lines, added extra flank with a really sound set of feet and great leg structure.



Hart Dakota 019A

Black Homozygous Polled Purebred
 ASA#3571072 Tattoo: 019G Birth: 1-19-19
 Act. BW: 78 Adj. WW: 874 WW Ratio: 116

EPDs																
CE	BW	WW	YW	ADG	MCE	MM	MWW	STAY	DOC	CWT	YG	MARB	BF	REA	API	TI
13	2.2	88	140	.33	7	33	77	18	9.3	48.5	-.42	-.27	-.106	.98	123	75
Rank																
20		2	1	1	25	1	1	35		2				20		20



Kuntz Sheriff 8A
DCR Mr. Exclusive E28
KLSR Miss United C501
Hart Merritt 155B
Hart Miss 347E
Hart Miss 041B

- Exclusive son that has an entirely different look about him and is long spined, big tanky bull that certainly captures maximum performance in his 874 lb package and garnished a WW Ratio of 116. Ranks 18th out of 214 bulls
- 2% in WW, 1% in YW, 1% in ADG, 1% in MILK, 1% in MWW, 2% CW - almost 1% in 6 traits - no joke here!!!
- His Hart Merritt first year female had a slam dunk first rate year and her grandam Hart Miss 041B is the dam of Hart South Point 286G in our 2020 offering!



Hart Skol 023A

Homozygous Black Homozygous Polled Purebred
 ASA#3570878 Tattoo: 023G Birth: 1-20-19
 Act. BW: 83 Adj. WW: 836 WW Ratio: 111

EPDs																
CE	BW	WW	YW	ADG	MCE	MM	MWW	STAY	DOC	CWT	YG	MARB	BF	REA	API	TI
12	3.1	91	138	.29	7	24	70	15	8.5	49.3	-.42	-.23	-.122	.88	116	76
Rank																
30		1	1	4	25	30	2			1				20		20

DCR Mr. Exclusive E28 **Kuntz Sheriff 8A**
Hart Miss 130E **KLSR Miss United C501**
 WCS El Dorado 5209C
 Hart Gold Mine Lass S019

- When you give a victory shout out, a sort of war chant or victory dance when a tremendous calf hits the ground, you know right off the bat something good is coming!
- ADJ. WW of 836 with A WW Ratio of 111!
- Skol has all the credentials of an elite herd bull that boasts huge performance data.
- 1% in WW, 1% in YW, 4% in ADG, 2% in MWW, 1% in CW, 20% in TI
- Out of a El Dorado first calf heifer with a gorgeous udder, her grandam "Hart Gold Mine Lass S019 continues to shine her light on her production sheet with extremely impressive attributes!





BLK
PLD

LOT 33

Hart 024G

Homozygous Black Homozygous Polled Purebred

ASA#3570950 Tattoo: 024G Birth: 1-20-19
Act. BW: 76 Adj. WW: 815 WW Ratio: 108

EPDs																
CE	BW	WW	YW	ADG	MCE	MM	MWW	STAY	DOC	CWT	YG	MARB	BF	REA	API	TI
13	1.6	85	131	.29	8	27	70	18	12.0	59.1	-.41	-.06	-.126	.94	133	79
Rank		3	2	4	15	10	1		30	1			20	25	30	10

DCR Mr. Exclusive E28

Hart Miss 196E

Kuntz Sheriff 8A

KLSR Miss United C501

WCS El Dorado 5209C

Hart Miss 124B

- Exclusive son that combines superior framework, early gestation, and excellent in his feet and leg structure that carries that 815 lb. weaning weight just like they should, and has a WW Ratio of 108.
- 3% in WW, 2% in YW, 4% in ADG, 15% in MCE, 10% in MILK, 1% in MWW, %1 in CW, 10% in TI.
- Excellent spread from birth to weaning.
- Hart Miss 196E is an El Dorado first calf heifer.

LOT 34

Hart 001G

Homozygous Black Homozygous Polled Purebred

ASA#3570932 Tattoo: 001G Birth: 1-11-19
Act. BW: 83 Adj. WW: 725 WW Ratio: 96

EPDs																
CE	BW	WW	YW	ADG	MCE	MM	MWW	STAY	DOC	CWT	YG	MARB	BF	REA	API	TI
9	2.8	87	132	.28	6	23	66	16	10.4	31.7	-.47	-.12	-.114	.85	118	76
Rank		2	2	10	35	35	4			35						20

DCR Mr. Exclusive E28

Hart Miss 185E

Kuntz Sheriff 8A

KLSR Miss United C501

BBS True Justice B10

Hart Miss 439Z

- Moderate low set Exclusive son that is easy fleshing, soft sided with excellent leg and foot structure and has a weaning weight of 725 lbs.
- 2% in WW, 2% in YW, 10% in ADG, 4% in MWW.
- Out of a True Justice first calf heifer that has a perfect udder and is an absolute sweetheart. Her Roughneck grandam has a WW Ratio of 6@104.

LOT 35

Hart 041G

Heterozygous Black Homozygous Polled Purebred

ASA#3570916 Tattoo: 041G Birth: 1-27-19
Act. BW: 67 Adj. WW: 832 WW Ratio: 111

EPDs																	
CE	BW	WW	YW	ADG	MCE	MM	MWW	STAY	DOC	CWT	YG	MARB	BF	REA	API	TI	
15	.9	84	127	.27	8	28	70	18	10.5	33.7	-.56	-.02	-.137	1.00	137	81	
Rank		10	30	4	4	10	10	10	2		30	10		10	15	20	5

DCR Mr. Exclusive E28

Hart Miss 166E

Kuntz Sheriff 8A

KLSR Miss United C501

BBS True Justice B10

Hart Miss 182B

- An Exclusive herd bull prospect that takes all of the guess work out of the selection process for you. He is extra long and deep as a river with a weaning weight of 832 lbs. and a WW Ratio of 111, this guy has a massive birth to weaning curve!
- 10% in CE, 4% in WW, 4% in YW, 10% in ADG, 10% in MCE, 10% in MILK, 2% in MWW, 10% in YG, 10% in BF, 15% in REA, 20% in API, 5% in TI- This bruiser is in the top 20% in 12 separate categories- really superb.
- Hetero Black Homo Polled (ASA has Hetro)
- Recommended heifer bull that is out of a True Justice first calf heifer that is absolutely that good and her Directive grandam has a WW Ratio of 3@108.

Sons of WS Equalizer E1

Homo. Black Homo. Polled Purebred ASA#3339288 Tattoo: E1 Birth: 1-21-17
WS Steeping Stone B44 x WS Ms. Wide Track A32

EPDs																
CE	BW	WW	YW	ADG	MCE	MM	MWW	STAY	DOC	CWT	YG	MARB	BF	REA	API	TI
9	1.4	63	98	.22	3	21	52	13	8.4	29.0	-.40	.08	-.087	.82	116	68

This Steeping Stone son literally fell into our laps. We specifically went to the National Stock Show that year with money in our pockets and somehow he ended up not being in the sale but he was later offered at Walsh's spring sale and things just lined up right for us that day. He offers a different avenue for our program combining extreme streamline muscle definition, really cool zipper fronted but with all of that power backing his dimension up! He is a producer that fits into any cattle program bringing progeny that have ideal birth to weaning curve, long spined while capturing maximum performance. These Equalizer sons all have big scrotal development and functionality to give them the necessary tools to be long lasting herd sires.



Hart Quantum 067A

Homozygous Black Homozygous Polled Purebred
 ASA#3570765 Tattoo: 067G Birth: 2-1-19
 Act. BW: 85 Adj. WW: 921 WW Ratio: 122

EPDs																
CE	BW	WW	YW	ADG	MCE	MM	MWW	STAY	DOC	CWT	YG	MARB	BF	REA	API	TI
8	3.0	81	116	.22	3	16	56	17	9.5	28.6	-.44	-.07	-.094	.89	119	72
Rank		10	15											35	35	



WS Steeping Stone B44
WS Equalizer E1
WS Ms. Wide Track A32
Welsh's Warsaw 312Z
Hart Miss 010D
Hart Miss 285B

- All Equalizer son that definitely earns his frontrunner status in the elite group of bulls to be offered.
- 10% in WW, 15% in YW.
- Extra long linear streamline looks, huge barrel, easy fleshing efficient bull that exploded for growth and shows no signs of slowing down with his 921 lb weaning weight and WW Ratio of 122, he will be a monster of a mature bull! Ranks 3rd out of 214 bulls!!
- Hart Miss 010D is a Welsh's Warsaw daughter that had a Trademark heifer last year and really stepped into a whole new division with her whopper of a bull calf. She puts up some pretty impressive data numbers with a WW Ratio of 2@112.



Hart 049A

Homozygous Black Homozygous Polled Purebred
 ASA#3571172 Tattoo: 049G Birth: 1-30-19
 Act. BW: 85 Adj. WW: 747 WW Ratio: 99

EPDs																
CE	BW	WW	YW	ADG	MCE	MM	MWW	STAY	DOC	CWT	YG	MARB	BF	REA	API	TI
7	2.6	65	100	.22	2	31	64	15	10.8	29.8	-.44	.15	-.106	.82	121	70
Rank		2	10											20		

WS Equalizer E1 **WS Steeping Stone B44**
Hart Miss 605Z **WS Ms. Wide Track A32**
 JAX 28X
 Hart Lady Goldy U259

- All herd bull prospect is a bit more moderate than his other maternal brothers but no less packed with explosiveness with a weaning weight of 747 and is backed with extra maternal power.
- Sound made bull with exceptional foot and bone structure, 2% in Milk, 10% in MWW, 20% in MARB.
- Hart Miss 605Z is such a stupendous cow that keeps being on top of the leader board for producing very functional progeny with a WW Ratio of 6@107, Hart Boomerang 064F to John and Kevin Horhian; Hart Derby 062E to McDonald Angus; Hart Jaxon 173D to Steve Stoddard.





LOT 38

Hart Godiath 094A

Homozygous Black Homozygous Polled Purebred
 ASA#3570773 Tattoo: 094G Birth: 2-4-19
 Act. BW: 90 Adj. WW: 901 WW Ratio: 120

WS Equalizer E1 WS Steeping Stone B44
Hart Miss Invasion U020 WS Ms. Wide Track A32
Triple C Invasion R47K
Hart Cracker Barrel Lass

EPDs																
CE	BW	WW	YW	ADG	MCE	MM	MWW	STAY	DOC	CWT	YG	MARB	BF	REA	API	TI
8	3.3	80	119	.24	2	22	63	19	10.3	41.6	-.44	-.08	-.103	.99	122	72
Rank		10	10	25	15			20	10			20			35	

- Power, Power, Power! These AI Equalizer sons set the bar extremely high in terms of the sheer dimension and extra deep girth. He struts out with eye appealing stature and a dynamic weaning weight of 901 lbs and a WW Ratio of 120! Ranks 7th out of 214 bulls.
- 10% in WW, 15% in YW, 15% in MWW, 20% in STAY, 10% in CW, 20% in REA.
- His Triple C Invasion mother is a super impressive cow with many accomplishments listed in her track record! WW Ratio - 10@107 and Hart Durango 240E to Steve Stoddard.

LOT 39

Hart 095A

Homozygous Black Homozygous Polled Purebred
 ASA#3571022 Tattoo: 095G Birth: 2-4-19
 Act. BW: 85 Adj. WW: 780 WW Ratio: 104

EPDs																
CE	BW	WW	YW	ADG	MCE	MM	MWW	STAY	DOC	CWT	YG	MARB	BF	REA	API	TI
9	2.0	61	96	.22	4	37	67	16	8.7	33.0	-.39	.14	-.094	.77	124	69
Rank					1		3		30			20				

WS Equalizer E1 WS Steeping Stone B44
Hart Miss X278 WS Ms. Wide Track A32
RFS Direct Force T19
Hart Lady Nasdaq P390

- Another AI son of Equalizer that is also backed by a super impressive established bull producing machine. A smidge more moderate but shows some really prominent attributes with a weaning weight of 780 and a WW Ratio of 104
- 1% in MILK, 3% in MWW, 20% in MARB
- His Direct Force dam is a real world producer that is fundamentally sound with added extra maternal strength with a WW Ratio of 7@107. Producing such standouts as Hart Complete 104F to Clay Sand Ranch; Hart 112B to Pat Knecht; Hart 219A to Scott Braun and putting 2 exceptional females into the herd.



LOT 40

Hart 266A

Homozygous Black Homozygous Polled Purebred
 ASA#3570870 Tattoo: 266G Birth: 3-11-19
 Act. BW: 78 Adj. WW: 751 WW Ratio: 100

EPDs																
CE	BW	WW	YW	ADG	MCE	MM	MWW	STAY	DOC	CWT	YG	MARB	BF	REA	API	TI
12	1.5	66	97	.19	5	17	50	15	10.7	31.1	-.43	.04	-.083	.99	122	68
Rank		20														

WS Equalizer E1 WS Steeping Stone B44
Hart Miss 121C WS Ms. Wide Track A32
W/C Utah 534A
Hart Ms. Ranchhand U100

- Equalizer son that is a more moderate image of Equalizer but definitely packed with meat and shows of his weaning weight of 751.
- 25% in CE, 20% in REA.
- Recommended heifer bull.
- A Utah daughter that has brought 2 replacement females but still puts up some really fine data with a WW Ratio of 3@106.





LOT 41

Hart Attack 048A

Black Homozygous Polled Purebred

ASA#3570805 Tattoo: 048G Birth: 1-30-19
Act. BW: 85 Adj. WW: 729 WW Ratio: 97

EPDs																	
CE	BW	WW	YW	ADG	MCE	MM	MWW	STAY	DOC	CWT	YG	MARB	BF	REA	API	TI	
8	2.5	60	88	.17	3	28	58	14	7.5	30.3	-.39	.09	-.102	.68	113	65	
Rank						10	35										30

WS Equalizer E1 **WS Steeping Stone B44**
Hart Miss 052D **WS Ms. Wide Track A32**
Profit
Hart Miss 074A

- AI son that is a soggy made, low set dynamite package with a weaning weight of 729, yet so refined and smooth made.
- Out of a very young Profit daughter just getting her feet wet in the bull breeding program and puts up some impressive data with a WW Ratio of 2@106.

LOT 42

Hart 421A

Homozygous Black Homozygous Polled Purebred

ASA#3570947 Tattoo: 421G Birth: 4-11-19
Act. BW: 83 Adj. WW: 829 WW Ratio: 110

EPDs																	
CE	BW	WW	YW	ADG	MCE	MM	MWW	STAY	DOC	CWT	YG	MARB	BF	REA	API	TI	
9	1.6	64	96	.20	3	25	57	19	8.1	26.9	-.48	-.03	-.109	.89	123	66	
Rank						25	25										35

WS Equalizer E1 **WS Steeping Stone B44**
Hart Miss 195C **WS Ms. Wide Track A32**
ES Ridgerider YW3
Hart Miss Power Drive R5

- A very young Equalizer son that really poured it on and kept coming all the way with a weaning weight of 829 lbs. and a WW Ratio of 110.
- Ridgerider dam that put on a show with her exceptional 2 calves she has had with a WW Ratio of 2@112, Hart 379F to Wyatt Ellingson.





Sons of DKSR Hollow Point C66

Homo. Black Homo. Polled Purebred ASA#3027384 Tattoo: C66 Birth: 3-14-15
TNT Outlaw A316 x KS Zahara Z710

EPDs																
CE	BW	WW	YW	ADG	MCE	MM	MWW	STAY	DOC	CWT	YG	MARB	BF	REA	API	TI
10	2.6	76	121	.28	3	17	55	19	13.6	36.5	-.33	.16	-.086	7	138	76

Hollow Point is known for implementing extra smooth muscle design, extreme fleshing ability, outcross pedigree and the ability to compliment our cow power. His accomplishments are being seen all across the nation in the perfect blend of huge growth, incredible performance which equals a true multi-dimensional herd sire that keeps cattle producers loving his consistency for very vigorous moderate birth sons and daughters that are very active right from the get go! Calves on the ground at Emmons Simmental that are coming very easily, 70 to 85 lbs. that are clean fronted and loaded with meat.



Hart On Point 104A

Homozygous Black Homozygous Polled Purebred

ASA#3571155 Tattoo: 104G Birth: 2-5-19
 Act. BW: 83 Adj. WW: 783 WW Ratio: 104

EPDs																
CE	BW	WW	YW	ADG	MCE	MM	MWW	STAY	DOC	CWT	YG	MARB	BF	REA	API	TI
14	2.3	70	108	.24	7	24	59	22	12.4	42.4	-.48	.07	-.111	1.05	141	72
Rank																
10		35	25	25	30	30	3	25	5		35			10	10	35



TNT Outlaw A316
DKSR Hollow Point C66
KS Zahara Z710
Dillons In Time
Hart Miss 524Y
Hart Lady Nasdaq P445

- Very complete Hollow Point son that is exactly that, on point to build a first class set of functional long lasting herd bulls of your own or get that added dimension for your set of market steers or replacements.
- 10% in CE, 25% in ADG, 25% in MCE, 3% in STAY, 25% in DOC, 5% in CW, 10% in REA, 10% in API.
- Weaning weight of 783 and a WW Ratio of 104
- His Dillons In Time dam leaves everything she has into her calves as she boasts an impressive WW Ratio of 6@109.



Hart Power Point 256A

Homozygous Black Homozygous Polled Purebred

ASA#3570775 Tattoo: 256G Birth: 3-10-19
 Act. BW: 83 Adj. WW: 839 WW Ratio: 112

EPDs																
CE	BW	WW	YW	ADG	MCE	MM	MWW	STAY	DOC	CWT	YG	MARB	BF	REA	API	TI
12	1.9	73	108	.22	5	25	61	21	13.6	25.8	-.40	.05	-.083	.81	136	73
Rank																
30		30	35		25	20	5	15							20	30

DKSR Hollow Point C66 **TNT Outlaw A316**
KS Zahara Z710
Hart Miss 021C **ES Ridgerider YW3**
Hart Miss 180A

- Belly dragging Hollow Point son bringing a 839 lb weaning weight to the forefront with a WW Ratio of 112, really impressive birth to weaning growth.
- 25% in MILK, 20% in MWW, 5% in STAY, 15% in DOC, 20% in API.
- Recommended Heifer bull.
- Young Ridgerider dam that has produced 3 bull calves in her young career all bearing over 800 lbs on their weaning weights.





LOT 45

Hart Roadhouse 328A

Homozygous Black Dbl. Polled Purebred
 ASA#3571000 Tattoo: 328G Birth: 3-18-19
 Act. BW: 80 Adj. WW: 878 WW Ratio: 117

EPDs																
CE	BW	WW	YW	ADG	MCE	MM	MWW	STAY	DOC	CWT	YG	MARB	BF	REA	API	TI
10	2.5	74	114	.25	5	22	59	13	10.0	37.8	-.37	.11	-.108	.67	122	74
Rank		25	20	20			30			15		30				25

DKSR Hollow Point C66 **TNT Outlaw A316**
KS Zahara Z710
Hart Miss 247B **JF Real World 050X**
Hart Miss Lewy R723

- Exceptional monster of a Hollow Point bull with a super girthy middle, extra long rounding into a very massive hind quarter that helps support that huge weaning weight of 878 and a WW Ratio of 117 and Ranks 16 out of 214 bulls.
- 20% in YW, 20% in ADG, 15% in CW.
- Dam is a Real World 050X daughter that had a Warsaw son last year that had a weaning weight of 847 lbs., solidifying her place as one of the new ladies at our program leading the charge of high performing patriarchs. Hart 149E to JRB Farms and 1 replacement female back in the herd.

LOT 46

Hart 363A

Homozygous Black Homozygous Polled Purebred
 ASA#3570867 Tattoo: 363G Birth: 3-26-19
 Act. BW: 87 Adj. WW: 772 WW Ratio: 103

EPDs																
CE	BW	WW	YW	ADG	MCE	MM	MWW	STAY	DOC	CWT	YG	MARB	BF	REA	API	TI
8	3.4	68	109	.26	2	21	55	17	10.9	39.1	-.41	.08	-.099	.89	122	68
Rank		30	15							10		35		35		

DKSR Hollow Point C66 **TNT Outlaw A316**
KS Zahara Z710
Hart Miss 117C **JF Nationwide 3215A**
Hart Miss 536Z

- Really stout made Hollow Point son with a weaning weight of 772 lbs. and a WW Ratio of 103.
- Young Nationwide dam with a WW Ratio of 2@102.

LOT 47

Hart 347A

Homozygous Black Dbl. Polled Purebred
 ASA#3571197 Tattoo: 347G Birth: 3-22-19
 Act. BW: 85 Adj. WW: 775 WW Ratio: 103

EPDs																
CE	BW	WW	YW	ADG	MCE	MM	MWW	STAY	DOC	CWT	YG	MARB	BF	REA	API	TI
8	3.3	74	111	.23	4	25	62	20	15.7	35.4	-.39	.06	-.098	.78	130	71
Rank		25	25	35		25	20	10	3	20						35

DKSR Hollow Point C66 **TNT Outlaw A316**
KS Zahara Z710
Hart Miss 705Y **SAS T101 Sweet Meat**
Hart Miss E103N S627

- This Hollow Point son is the spitting image of Hart Hitman with a weaning weight of 775 lbs. and a WW Ratio of 103
- Sweet Meat dam that has a very strong maternal background with 4 daughters working hard for us.



LOT 48

Hart 398A

Dbl. Black Homozygous Polled Purebred
 ASA#3571137 Tattoo: 398G Birth: 4-4-19
 Act. BW: 85 Adj. WW: 763 WW Ratio: 101

EPDs																
CE	BW	WW	YW	ADG	MCE	MM	MWW	STAY	DOC	CWT	YG	MARB	BF	REA	API	TI
7	3.2	73	113	.25	2	19	55	15	11.2	34.7	-.46	.07	-.111	.88	119	71
Rank		30	25	20						25		35				

DKSR Hollow Point C66 TNT Outlaw A316
KS Zahara Z710
Hart Miss 475Z Triple C Magical Moment
Hart Miss Lewy S374

- Hollow Point son with a moderate build, beef bull that will be a benefit to the industry, weaning weight of 763 lbs. and a WW Ratio of 101.
- Magical Moment dam with a WW ratio of 6@101.



LOT 49

Hart 276A

Homozygous Black Homozygous Polled Purebred
 ASA#3571145 Tattoo: 276G Birth: 3-12-19
 Act. BW: 90 Adj. WW: 743 WW Ratio: 99

EPDs																
CE	BW	WW	YW	ADG	MCE	MM	MWW	STAY	DOC	CWT	YG	MARB	BF	REA	API	TI
8	2.8	73	111	.24	4	26	62	18	11.9	34.2	-.41	.02	-.102	.79	124	71
Rank		30	25	25		20	15			30	25					

DKSR Hollow Point C66 TNT Outlaw A316
KS Zahara Z710
Hart Miss 496Z WLB Roughneck 366R 377W
Hart Ms. Ranchhand U100

- Moderate made bull with very nice muscle definition in on a 743 weaning weight.
- Roughneck daughter with a WW Ratio of 5@102, the mother to Hart Denim 208E to Gilliland Livestock and Hart 214B to Eichler Farms.



LOT 50

Hart 069A

Homozygous Black Homozygous Polled Purebred
 ASA#3570893 Tattoo: 069G Birth: 2-1-19
 Act. BW: 69 Twin Adj. WW: 707 WW Ratio: N/A

EPDs																
CE	BW	WW	YW	ADG	MCE	MM	MWW	STAY	DOC	CWT	YG	MARB	BF	REA	API	TI
7	3.1	77	117	.25	3	20	58	20	12.5	44.6	-.32	.09	-.087	.77	131	73
Rank		20	15	20				35	10	25	3	30			30	30

DKSR Hollow Point C66 TNT Outlaw A316
KS Zahara Z710
Hart Miss 141D JF Rancher 222Z
Hart Miss 378A

- A moderate Hollow Point son that is low set, deep middled that weaned at 707.
- 20% in WW, 15% in YW, 20% in ADG, 10% in STAY, 3% in CW.
- A 2nd year Rancher daughter that is getting the job done. Her Trademark son from last year to Maurie Larsen.



Sons of WHF Eclipse E35

Homo. Black Homo. Polled 3/4 SM 1/4 AN ASA#3310453 Tattoo: E35
Birth: 3-3-17

TJ Main Event 503B x WHF Canda 35C

EPDs																
CE	BW	WW	YW	ADG	MCE	MM	MWW	STAY	DOC	CWT	YG	MARB	BF	REA	API	TI
14	.5	90	133	.27	7	17	62	13	12.0	47.7	-.35	.09	-.070	1.04	124	81

Eclipse or Zip Tie as we call him, came to us by way of the 2018 Bulls of the Bluegrass sale and from the Wayward Hills Farms known for their impressive show cattle. But it was Zip Tie's excellent stature and tremendous power and first class calving ease #'s that had us at hello. He pushes the envelope in terms of supreme weaning weight data, has a zipper front, nice smooth shoulders, level topped and big backed, rounding out a big ol' set of hooves and great leg structure! With the performance that we are seeing out of his progeny we know he will have a bright future here.



Hart Dark Knight 222A

Homozygous Black Homozygous Polled Purebred

ASA#3570987 Tattoo: 222G Birth: 3-7-19
Act. BW: 74 Adj. WW: 774 WW Ratio: 103

EPDs																
CE	BW	WW	YW	ADG	MCE	MM	MWW	STAY	DOC	CWT	YG	MARB	BF	REA	API	TI
12	.8	73	106	.21	6	25	61	18	11.2	36.9	-.38	.13	-.081	.92	138	76
Rank		25	30	30		25	20	35		15		25		30	20	20



TJ Main Event 503B
WHF Eclipse E35
WHF Canda 35C
JF Nationwide 3215A
Hart Miss 232C
Hart Miss 363Z

- A Blaze faced super sleek streamline, smooth shouldered bull that has a round barrel with extra depth and sets up very well on a great set of legs and big feet weilding an impressive 774 lb weaning weight.
- 25% in CE, 25% in MILK, 20% in MWW, 15% in CW, 25% in MARB, 20% in API, 20% in TI.
- Recommended heifer bull.
- Dam is a young Nationwide female that had a Ridgerider bull calf last year that weaned over 800 lbs. and went to Todd Thoreson.



Hart 119A

Homozygous Black Homozygous Polled Purebred

ASA#3570962 Tattoo: 119G Birth: 2-8-19
Act. BW: 78 Adj. WW: 827 WW Ratio: 110

EPDs																
CE	BW	WW	YW	ADG	MCE	MM	MWW	STAY	DOC	CWT	YG	MARB	BF	REA	API	TI
13	1.2	79	114	.22	7	23	62	14	11.7	37.6	-.30	.17	-.074	.71	135	79
Rank		15	20	20		20	15		35	15		20			25	10

WHF Eclipse E35 TJ Main Event 503B
Hart Miss 205E WHF Canda 35C
Welsh's Warsaw 312Z
Hart Miss X682

- Impressive AI Zip Tie son that is put together in an attractive profile and presence along with his super impressive EPDs data and weaning weight of 827 and a WW Ratio of 110.
- 15% in CE, 15% in WW, 20% in YW, 20% in MCE, 15% in CW, 10% in TI.
- Recommended heifer bull.
- First calf for this Welsh's Warsaw heifer that really put him together right from the start. Her grandam is a very prolific female still working in our herd today.





Hart 140A

Homozygous Black Homozygous Polled Purebred
 ASA#3570782 Tattoo: 140G Birth: 2-14-19
 Act. BW: 83 Adj. WW: 840 WW Ratio: 112

EPDs																
CE	BW	WW	YW	ADG	MCE	MM	MWW	STAY	DOC	CWT	YG	MARB	BF	REA	API	TI
14	1.6	90	131	.25	7	17	62	12	11.4	48.2	-.39	.15	-.084	1.04	133	85
Rank		1	3	20	20		15			2		20		10	25	2



TJ Main Event 503B
WHF Eclipse E35
WHF Canda 35C
Hart Mega Watts 019C
Hart Miss 027E
Hart Miss 258C

- This big bruiser Zip Tie bull really poured it on both in the pasture in the cow and when he came home at weaning. He carries his impressive weight really nicely spread out throughout a perfect frame with extra length and added dimension, moderate birth and explosive weaning weight of 840 lbs.
- 15% in CE, 1% in WW, 3% in YW, 15% in MWW, 2% in CW, 10% in REA, 2% in TI - very impressive data along with his impressive presence.
- Recommended heifer bull.
- A Hart Mega Watts first calf heifer knocked it out of the park for sure by parking this big boy into the elite group of bulls to sell. His grandam is a highly maternal female.



Hart 111A

Homozygous Black Homozygous Polled Purebred
 ASA#(3570853) Tattoo: 111G Birth: 2-6-19
 Act. BW: 65 Twin Adj. WW: 754 WW Ratio: N/A

EPDs																
CE	BW	WW	YW	ADG	MCE	MM	MWW	STAY	DOC	CWT	YG	MARB	BF	REA	API	TI
14	2.1	83	127	.28	7	22	63	14	11.4	42.2	-.27	.03	-.052	.87	128	78
Rank		5	4	10	25		15			5						15

WHF Eclipse E35 **TJ Main Event 503B**
Hart Miss 109E **WHF Canda 35C**
JBS Single Shot 601C
Hart Miss 182Y

- AI twin that has that eye catching edge that will work in any segment in the beef industry.
- 10% in CE, 5% in WW, 4% in YW, 10% in ADG, 15% in MWW, 5% in CW, 15% in TI.
- Single Shot first calf heifer that kept both of her calves on her and did a super job of growing them up.



Hart Neon Moon 04A

Homozygous Black Homozygous Polled Purebred
 ASA#3669599 Tattoo: 04G Birth: 3-10-19
 Act. BW: 78 Adj. WW: 967 WW Ratio: N/A

EPDs																
CE	BW	WW	YW	ADG	MCE	MM	MWW	STAY	DOC	CWT	YG	MARB	BF	REA	API	TI
13	.5	74	107	.20	6	19	56	13	11.1	35.9	-.41	.02	-.095	.90	124	74
Rank		20	25	25	35		35			20						25

WHF Eclipse E35 **TJ Main Event 503B**
Hart Miss 080E **WHF Canda 35C**
W/C Utah 534A
Hart Miss 619Z

- An Eclipse son that showcases his very powerful, dynamic larger frame package with a very impressive 967 lbs.
- His Utah first calf heifer stems from an extremely impressive grand dam that has a WW Ratio of 6@101



Hart 129A

Homozygous Black Homozygous Polled Purebred
 ASA#3570957 Tattoo: 12G Birth: 2-10-19
 Act. BW: 60 Adj. WW: 663 WW Ratio: N/A

EPDs																
CE	BW	WW	YW	ADG	MCE	MM	MWW	STAY	DOC	CWT	YG	MARB	BF	REA	API	TI
13	1.6	79	121	.26	7	24	64	18	11	22.9	-.45	.02	-.079	.95	136	77
Rank		15	10	10	15	20	30	10						25	20	15

WHF Eclipse E35 **TJ Main Event 503B**
Hart Miss 201E **WHF Canda 35C**
HL Rebel 435C
Hart Miss X69Z

- A moderate Eclipse bull that is out of a an HL Rebel 435C daughter that is stout and stands up tall with the other Eclipse bulls.



Hart 106A

Homozygous Black Homozygous Polled Purebred
 ASA#3570813 Tattoo: 106G Birth: 2-6-19
 Act. BW: 71 Adj. WW: 834 WW Ratio: 111

EPDs																	
CE	BW	WW	YW	ADG	MCE	MM	MWW	STAY	DOC	CWT	YG	MARB	BF	REA	API	TI	
12	1.3	83	118	.22	6	20	61	11	13.8	24.5	-.34	.01	-.065	.75	118	78	
Rank																	
25	5		15	35		20		15									15



TJ Main Event 503B
WHF Eclipse E35
WHF Canda 35C
W/C Utah 534A
Hart Miss 060E
Hart Miss 705Y

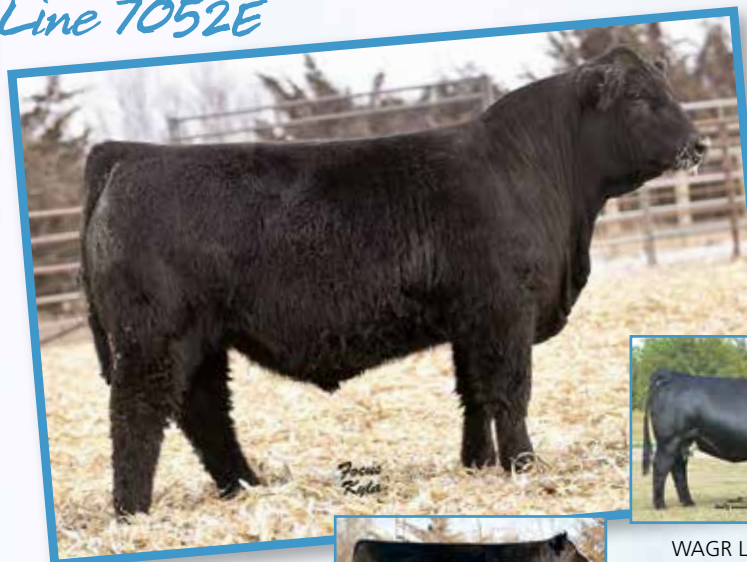
- Zip Tie son that has a long spine with a big back, and an impressive weaning weight of 834 and a WW Ratio of 111.
- 5% for WW, 15% for YW, 15% in DOC, 15% in TI.
- Huge birth to weaning growth spread!
- First calf Utah heifer that did a bang up job raising this bull calf up right!

Sons of WAGR Fine Line 7052E

Black Dbl. Polled Purebred ASA#3334863
 Tattoo: 7052E Birth: 3-23-17

TL Bottomline x WAGR Lullaby 703T

Fine Line comes to us by way of WAGR Cattle Co. and Effling Cattle Co. in their 2018 bull sale. He is a Bottomline son out of the WAGR Lullaby 703T dam that goes back to the famous Melody cow that has been so dominant and one of their most prolific and has so many champions to her track record! He is very streamline and has extra smooth made muscle dimension, crazy cool neck extension, and sets up on his fine leg and hoof structure perfectly. These four Fine Line sons have a very different look for us as we found a very nice balance of refinement and power.



WAGR Lullaby 703T, Dam
 3C Melody M668 BZ Grandam

EPDs																
CE	BW	WW	YW	ADG	MCE	MM	MWW	STAY	DOC	CWT	YG	MARB	BF	REA	API	TI
10	2.2	52	72	.12	6	18	44	12	4.5	20.1	-.43	.21	-.111	.61	115	63



Hart 322A

Black Homozygous Polled Purebred
 ASA#3570804 Tattoo: 322G Birth: 3-18-19
 Act. BW: 85 Adj. WW: 762 WW Ratio: 101

EPDs																
CE	BW	WW	YW	ADG	MCE	MM	MWW	STAY	DOC	CWT	YG	MARB	BF	REA	API	TI
9	1.0	49	68	.12	5	27	52	18	6.5	36.8	-.53	-.03	-.124	1.04	116	58
Rank																
35		10		35		15		20		20		10				

WAGR Fine Line 7052E **TL Bottomline**
Hart Miss 050A **WAGR Lullaby 703T**
ES Ridgerider YW3
Hart Miss 616Y

- A younger Fine Line son with a moderate refined package that packs a punch into his 762 lb. frame and a WW Ratio of 101.
- Ridgerider female that has some impressive ratio background - BW Ratio-of 5@104 and a WW Ratio of also 5@104.





LOT 59

Hart Line Man 350A

Black Homozygous Polled Purebred

ASA#3570845 Tattoo: 350G Birth: 3-22-19
Act. BW: 87 Adj. WW: 852 WW Ratio: 113

EPDs																
CE	BW	WW	YW	ADG	MCE	MM	MWW	STAY	DOC	CWT	YG	MARB	BF	REA	API	TI
7	3.2	70	104	.22	5	18	53	13	9.3	39.6	-.47	-.04	-.125	.86	107	66
Rank											10	20				



Hart Proud 343F, Maternal Brother



Hart Prime 017E, Maternal Brother

WAGR Fine Line 7052E TL Bottomline
WAGR Lullaby 703T
Hart Miss 098C GLS Integrate Z3
Hart Miss Limit Up S195

- This Fine Line son has got heavy hitter written all over his pedigree and backed by the finest female we have had the pleasure to raise on our place! The caliber of power that emulates from this combination is second to none! He has some big boots to fill, following in his brothers footsteps but we know that he is up to the task.
- Adj WW 852 with a WW Ratio of 113, ranks 30 out of 214 bulls
- Hart Miss 098C is a bull producing phenom that has blown our socks off every year. She is such an impressive cow with so many accomplishments in her short track record. She produces such easy fleshing progeny it's like just another day in the park for her!!! She was on our list for flushing this year but she calved just a little past the deadline, so next year for sure!! Hart Proud 343F to Dakota Simmental Ranch, Hart Prime 017E to Emmons Black Simmentals.

LOT 60

Hart Big Chief 216A

Homozygous Black Homozygous Polled Purebred

ASA#3570797 Tattoo: 216G Birth: 3-6-19
Act. BW: 87 Adj. WW: 886 WW Ratio: 118

EPDs																
CE	BW	WW	YW	ADG	MCE	MM	MWW	STAY	DOC	CWT	YG	MARB	BF	REA	API	TI
8	2.7	71	98	.17	5	19	54	19	7.7	30.4	-.40	.13	-.091	.82	129	71
Rank											30	25	35			

WAGR Fine Line 7052E TL Bottomline
Hart Miss 040C WAGR Lullaby 703T
Welsh's Warsaw 312Z
Hart Miss 119A

- Huge performance, extra stout Fine Line son that has amazing length of body, explosive birth to weaning curve with a whopping weaning weight 886 lbs. and a WW Ratio 118 and Ranks 14 out of 214 bulls
- A very performance driven Welsh's Warsaw daughter that has been putting out top notch calves in her young age.





LOT 61

Hart 096A

Homozygous Black Homozygous Polled Purebred

ASA#3570863 Tattoo: 096G Birth: 2-4-19
Act. BW: 80 Adj. WW: 822 WW Ratio: 109

EPDs																
CE	BW	WW	YW	ADG	MCE	MM	MWW	STAY	DOC	CWT	YG	MARB	BF	REA	API	TI
7	2.8	69	96	.17	4	22	57	16	7.5	43.4	-.34	.12	-.100	.71	120	70
Rank											4	25				

WAGR Fine Line 7052E TL Bottomline
Hart Miss 116D WAGR Lullaby 703T
Welsh's Warsaw 312Z
Hart Miss Z453

- This Fine Line really put in a stellar performance and really pulled out the stops with a 822 weaning weight and a WW Ratio of 109
- 4% in CW, 25% in MARB
- Hart Miss 116D is a Welsh's Warsaw daughter puts in a top notch performance every year with a WW Ratio of 2@108, Hart 031F to Raymond Wilkens.

LOT 62

Hart 425A

Dbl. Black Dbl. Polled Purebred

ASA#3571201 Tattoo: 425G Birth: 4-13-19
Act. BW: 78 Adj. WW: 767 WW Ratio: 102

EPDs																
CE	BW	WW	YW	ADG	MCE	MM	MWW	STAY	DOC	CWT	YG	MARB	BF	REA	API	TI
12	2.0	58	84	.16	6	21	50	16	8.1	28.2	-.44	.11	-.116	.72	123	65
Rank											30					

WAGR Fine Line 7052E TL Bottomline
Hart Miss X753 WAGR Lullaby 703T
WS Hallmark T2
Hart Lady Desperado R429

- A very young, middle of April, Fine Line son that won't be undone by any others in his contemporary group. He sports a 767 weaning weight with a WW Ratio of 102.
- Out of a Hallmark supreme female that has been on top of her game ever since she set foot on our place. She boasts some impressive data with a BW Ratio of 8@103, and a WW Ratio of 8@101. Hart Larado 178E to Chad Jessen; Hart Iron Warrior 057C to Todd O'Bryan; Hart 042B to Mitch Johnson; 2 beautiful replacement females in our herd.



Hart Laredo 178E, Maternal Brother



Hart Iron Warrior 057C, Maternal Brother



Hart 042B, Maternal Brother



Sons of GLS Integrate Z3

Homo. Black Homo. Polled Purebred ASA#2659754 Tattoo: Z3 Birth: 1-1-12

Mr. NLC Upgrade U8676 x GLS Miss BTE W149

EPDs																
CE	BW	WW	YW	ADG	MCE	MM	MWW	STAY	DOC	CWT	YG	MARB	BF	REA	API	TI
14	2.5	100	165	.41	7	11	61	8	15.9	70.1	-.56	-.19	-.157	1.30	114	83

When you raise seedstock with one main goal your entire 45 years of existence you remember each and every single great animal you ever raised or purchased. We remember just like it was yesterday when the opportunity presented itself to purchase Integrate. We just remember Kerry saying "no matter what that bull is coming to SD", and even though he can no longer service females, he will live out his glory days basking in the sunny days at the farm (ok, there are no sunny days). We have a very limited amount of semen left, so we are rationing it out and we are so very fortunate that it stuck!!!



Hart Most Wanted 083G

Homozygous Black Homozygous Polled Purebred

ASA#3571195 Tattoo: 083G Birth: 2-2-19

Act. BW: 87 Adj. WW: 918 WW Ratio: 122

EPDs																
CE	BW	WW	YW	ADG	MCE	MM	MWW	STAY	DOC	CWT	YG	MARB	BF	REA	API	TI
8	3.9	99	152	.34	5	18	67	9	12.1	69.3	-.51	-.11	-.136	131	107	82
Rank		1	1	1			3		30	1	25		10	1		4

GLS Integrate Z3

Hart Miss 696Y

Mr. NLC Upgrade U8676

GLS Miss BTE W149

WLB Roughneck 366R 377W

Hart Ms. Royalflush U527

- When you study this piece of breeding masterpiece on paper, #1 in 5 of the major attributes - WW, YW, ADG, CW, REA and viewing him in the flesh, you realize what a major asset he would bring to any segment in the beef industry.
- He ranks 4th heaviest out of 214 bulls with a weaning weight of 918 lbs and a WW Ratio of 122. He excels with supreme muscle definition, huge massive deep middle, amazing length of spine, big backed, excellent foot and leg structure. All the right pieces in all the right places to make him the necessary tool any progressive breeding program would be proud to have in their arsenal!
- His WLB Roughneck dam steadily cranks out really reliable prosperous progeny that are so consistent with enormous maternal strength with a BW Ratio of 7@101 and a whopping WW Ratio of 7@108. Hart Fury 373F - Turner Cattle Co; Hart 288F - Rupp Farms; Hart 360E - Bohr Farms; Hart Burlington 087E - 6H Ranch; Hart Spark Plug 168E - McDonald Angus Ranch; Hart 310E Kuckla Farms; Hart Interstate 102E - Ashworth Simmentals; Hart 258E - Steve Stoddard; Hart 230E - Steve Stoddard; Hart 197E - Loren Duchsherer; Hart 210D - David Grenz; 152D - Todd O'Bryan; 254D - Clay Ekstrum; 212D-Wayne & Bucky Kukla; 270D - Jeff Roeher; 232D - Tracy Burgod; 106D - Travis Thompson; 151D - Steve Stoddard; Hart Rollin' Coal - Doll Simmentals; Hart Iron Warrior 057C - Todd O'Bryan. These prized Integrate bulls have all been a part of some extremely well known and prestigious cattle producers!



Hart 043G

Homozygous Black Homozygous Polled Purebred

ASA#3570883 Tattoo: 043G Birth: 1-2-19

Act. BW: 78 Adj. WW: 798 WW Ratio: 106

GLS Integrate Z3

Hart Miss Legacy T134

Mr. NLC Upgrade U8676

GLS Miss BTE W149

Nichols Legacy G151

Hart Miss Paramount R269

EPDs																
CE	BW	WW	YW	ADG	MCE	MM	MWW	STAY	DOC	CWT	YG	MARB	BF	REA	API	TI
13	1.6	83	130	.29	7	20	62	16	12.9	58.1	-.50	-.05	-.137	1.12	128	78
Rank		4	3	4		25		20	20	1	30		10	5		15

- Here is another very impressive Integrate son that is just a bit more moderate, but had a weaning weight of almost 800 lbs. - 798 lbs. to be on the penny.
- 20% in CE, 4% in WW, 3% in YW, 4% in ADG, 25% in MCE, 20% in MWW, 1% in CW, 10% in BF, 5% in REA, 15% in TI - another bull that really has some major performance.
- His Paramount dam is one of those females that no matter what, she is going to give you all she has and she is still shining brightly with a WW Ratio of 10@103.

Sons of WCS El Dorado 5209C

Homo. Black Homo. Polled Purebred ASA#3000561 Tattoo: 5209C Birth: 2-4-15

LRS Turning Point 3117A x KS Sierra R992

EPDs																
CE	BW	WW	YW	ADG	MCE	MM	MWW	STAY	DOC	CWT	YG	MARB	BF	REA	API	TI
7	3.4	79	125	.28	5	33	72	20	10.6	47.2	-.56	-.13	-.124	1.25	121	71

El Dorado, in the Reserve champion pen of bulls in the Denver Stock Show, is a standout LRS Turning Point 3117A son that was a lead off bull in Accelerated Genetics and is still in demand as we have shown in our sales. He has been the sire of purebred sons and daughters as sale topping standouts in leading cattle producer sales all over the nation. He has matured into a massive herd bull that commands attention as he combines modest birth weights, fast gestation, explosive muscle dimension, and a superior fundamental structure with excellent foot and bone performance. He continually cranks out easy fleshing, belly dragging prodigy in both sons and daughters.



LOT 65

Hart Gemini 093A

Homozygous Black Homozygous Polled Purebred

ASA#3570931 Tattoo: 093G Birth: 2-4-19
Act. BW: 85 Adj. WW: 828 WW Ratio: 110

EPDs																
CE	BW	WW	YW	ADG	MCE	MM	MWW	STAY	DOC	CWT	YG	MARB	BF	REA	API	TI
9	3.0	80	127	.30	5	31	70	18	8.7	44.9	-.56	-.14	-.137	1.13	121	72
Rank																
	10	4	2		3	1	35		3	10		10	4		35	

WCS El Dorado 5209C LRS Turning Point 3117A
KS Sierra R992
Hart Miss 184D GLS Integrate Z3
Hart Miss 115Y

- Another big time El Dorado herd bull prospect with exceptional foot and bone structure, with that extra added dimension in that big barrel and take a look at his massive hind quarter. He will give you those top weighted steers and replacements and has a weaning weight of 828 and a WW Ratio of 110
- 10% in WW, 4% in YW, 2% in ADG, 2% in MILK, 1% in MWW, 3% in CW, 10% in YG, 10% in BF, 4% in REA
- This young Integrate daughter is going to make her place in the world as all Integrate progeny do. She has a WW Ratio of 2@107, and has already put one very attractive replacement female in the herd to make super bulls or scale crushing steers or flashy replacements.

LOT 66

Hart 098A

Homozygous Black Dbl. Polled Purebred

ASA#3571076 Tattoo: 098G Birth: 2-5-19
Act. BW: 87 Adj. WW: 901 WW Ratio: 120

EPDs																
CE	BW	WW	YW	ADG	MCE	MM	MWW	STAY	DOC	CWT	YG	MARB	BF	REA	API	TI
5	4.1	81	119	.23	3	32	72	20	10.9	39.9	-.50	.07	-.124	.98	126	76
Rank																
	10	15	35		2	1	15		10	30	35	20	20		20	

WCS El Dorado 5209C LRS Turning Point 3117A
KS Sierra R992
Hart Miss X348 SAS T101 Sweet Meat
Hart Lady Magnum P152

- EL Dorado just keeps cranking out these bulls that dress to impress, just can't help but appreciate how much depth and muscle mass they bring to the table, he has a weaning weight of 901 lbs. and a WW Ratio of 120, and ranked 8th out of our 214 bulls.
- 10% in WW, 15% in YW, 2% MILK, 1% in MWW, 10% in CW
- Sweet Meat dam that has had her fair share of the limelight with a WW Ratio-7@109, Hart 064B to Tracy Burgod and Hart 159A to Ted Nelson.



Hart Cliffhanger 180A

Homozygous Black Homozygous Polled Purebred

ASA#3571125 Tattoo: 180G Birth: 3-1-19
Act. BW: 87 Adj. WW: 940 WW Ratio: 125

WCS El Dorado 5209C

LRS Turning Point 3117A

Hart Miss Club King W414

KS Sierra R992

RC Club King 040R

Hart Miss Royal Flush S5

EPDs																
CE	BW	WW	YW	ADG	MCE	MM	MWW	STAY	DOC	CWT	YG	MARB	BF	REA	API	TI
8	33.8	90	138	.30	5	22	67	18	11.7	50.5	-.56	.01	-.129	1.25	128	80
Rank																
	1	1	2			4			35	1	10		20	1		10

- This AI standout from El Dorado is the most complete and stoutest El Dorado son that we have raised. His is our #1 weaning weight bull out of the total offering, 214 bulls, smashing the scales at 940 lbs. and also carries a tremendous WW Ratio of 125.
- 1% in WW, 1% in YW, 2% in ADG, 4% in MWW, 1% in CW, 10% in YG, 20% in BF, 1% in REA, 10% in TI- Super set of credentials to go along with his superior structure and fundamental development.
- This Club King female is a first class producer that has quite a long list of top notch accomplishments listed in her track record and continually shows us that she has all the necessary tools to be a long lasting female. She carries along with her a WW Ratio of 9@104 and gave us such standouts like Hart 041F to Steve Stoddard; Hart 160E to Gilliland Livestock; Hart 201C to Jerry Barton; Hart 229A to Tim Campbell; Hart 449Z to John Berdo; and also produced Miss 106Y who is the dam of Hart Milo 211G, Hart Golden Boy 196F to Backer Farms and Hart Custer 095E to Shanka Farms and Hart Simmentals.



This sale will be broadcast live on the internet!

DVAuction
Broadcasting Real-Time Auctions



Hart 268A

DbL. Black Homozygous Polled Purebred

ASA#3570884 Tattoo: 268G Birth: 3-11-19
Act. BW: 78 Adj. WW: 768 WW Ratio: 102

WCS El Dorado 5209C

LRS Turning Point 3117A

KS Sierra R992

Hart Miss 135B

AJE/HS/MBCC Outlook

Hart Miss Stainless R443

EPDs																
CE	BW	WW	YW	ADG	MCE	MM	MWW	STAY	DOC	CWT	YG	MARB	BF	REA	API	TI
8	2.3	70	104	.21	3	24	59	20	12.8	31.4	-.44	-.09	-.106	.83	121	67
Rank																
						35	35	15	20							

- El Dorado herd bull prospect that has a very nice outcross pedigree going back to Outlook, with a weaning weight of 768 lbs. and a WW Ratio of 102.
- Outlook daughter that has a BW Ratio of 4@103.



Sons of Hart State Of War 056C

Black Homo. Polled Purebred ASA#2975543 Tattoo: 056C

Birth: 2-21-15

Welsh's Warsaw 312Z x Hart Miss 102A

EPDs																
CE	BW	WW	YW	ADG	MCE	MM	MWW	STAY	DOC	CWT	YG	MARB	BF	REA	API	TI
19	-.5	91	134	.27	11	15	60	22	12.9	45.0	-.39	-.18	-.105	.84	147	81



State Of War is a Warsaw son that has proven himself as a calving ease wizard that has helped propel the calving ease division of bulls in the Canadian provinces and in the lower 48. McMillen Ranching LTD had their very best bull they had ever raised last year and he was a State Of War son. Our first offering of State Of War lineup last year was very well received! He is well known for his nicely balanced EPD profile that excels in low birth weights, very vigorous sons and daughters that snap up and explode from the start and finishing with a very stylish and performance packed package!



Hart Daddy Warbucks 082G

Homozygous Black Homozygous Polled Purebred
 ASA#3571034 Tattoo: 082G Birth: 2-2-19
 Act. BW: 83 Adj. WW: 823 WW Ratio: 109

EPDs																
CE	BW	WW	YW	ADG	MCE	MM	MWW	STAY	DOC	CWT	YG	MARB	BF	REA	API	TI
12	1.0	77	111	.22	7	21	59	22	12.4	36.3	-.40	-.16	-.108	.77	130	71
Rank	20	35	20	25	30	30	3	25			20					35



Welsh's Warsaw 312Z
Hart State Of War 056C
Hart Miss 102A
COTT Locator 582L
Hart Lady Locator T288
Hart Cracker Barrel Lass

- All super stud bull out of State Of War that combines superior framework enveloped in sleek muscle design, amazing length of body with and an eye catching edge. Presents a tremendous weaning weight of 823 lbs. and a WW Ratio of 109.
- 20% in CE, 20% in WW, 25% in YW, 3% in STAY, 25% in DOC, 20% in CW.
- Stemming from an out of this world Locator dam that is one of those cows that are so consistent in the makeup and design which she propels into her progeny. Plus highly maternal with 8 electric females getting it done for us.

Sons of W/C Utah 534A

Homo. Black Homo. Polled Purebred ASA#2752290 Tattoo: 534A
 Birth: 3-14-13

Yardley Utah Y361 x Miss Werning 534R

EPDs																
CE	BW	WW	YW	ADG	MCE	MM	MWW	STAY	DOC	CWT	YG	MARB	BF	REA	API	TI
12	.9	64	85	.13	4	17	49	112	13.3	16.9	-.48	-.07	-.103	.78	108	65

Utah has given us some very prominent bulls that have sold in our sales over the years, Hart 280F to Rodney West; Hart Missouri 066E to Scott Braun; Hart 4 Corners 243D to Nesemeier Cattle Ranch; Hart Salt Lake 088C to Tony Phipps; Hart Mega Watts 019C who is a calving ease top bull for Hart Simmentals; Hart Frisky Whiskey 010C to Todd O'Bryan. He sires calving ease prodigy that have delivered proven results since 2016 and are still producing top shelf sons and daughters to this day.



Hart 210A

Homozygous Black Homozygous Polled Purebred
 ASA#Pending Tattoo: 210G Birth: 3-5-19
 Act. BW: 83 Adj. WW: 810 WW Ratio: 109

Est. EPDs																
CE	BW	WW	YW	ADG	MCE	MM	MWW	STAY	DOC	CWT	YG	MARB	BF	REA	API	TI
12	2.1	63	90	.17	5	22	54	16	11.9	19.0	-.45	-.06	-.10	.73	116	64
Rank	25								30							

W/C Utah 534A **Yardley Utah Y361**
Hart Miss 354Z **Miss Werning 534R**
 JAX 28X
 Hart Miss Hemi T534



- Weaning weight of 810, WW Ratio-109
- A Utah her bull prospect that has some superior dimension, a ton of extra length, a huge back that rounds out into a very heavy hip structure. Out of a Jax 28X daughter that brings a different dynamic to the group.



Sons of Hart Merritt 155B

Homo. Black Homo. Polled Purebred ASA#2843111 Tattoo: 155B
Birth: 3-12-14

ASR Final Sort X0151 x Hart Miss X279

EPDs																
CE	BW	WW	YW	ADG	MCE	MM	MWW	STAY	DOC	CWT	YG	MARB	BF	REA	API	TI
14	1.8	71	121	.31	6	32	67	17.3	9.3	44.6	-.40	-.13	-.109	.86	125	70

With 74 progeny under his belt, Merritt has brought bulls that easily transition into other breeders programs, kick starting their level of performance up which equals very marketable feeders and more in their bottom line. His females nourish their babies from udders with perfect teat size and placement. He really delivers off the charts muscle development, very deep rib depth, massive hind quarter expression and overall balance.



Hart Groundload 085E, Son

LOT 71

Hart 278A

Homozygous Black Homozygous Polled Purebred
ASA#3571163 Tattoo: 278G Birth: 3-13-19
Act. BW: 83 Adj. WW: 823 WW Ratio: 109

Hart Merritt 155B **ASR Final Sort X0151**
Hart Miss X278
Hart Miss 551Z **Triple C Agility U48R**
Hart Sweet Thing W042

EPDs																
CE	BW	WW	YW	ADG	MCE	MM	MWW	STAY	DOC	CWT	YG	MARB	BF	REA	API	TI
10	2.7	74	120	.29	5	25	62	20	10.6	49.8	-.45	-.36	-.107	1.08	110	63
Rank		25	10	4		20	15	20		1				10		

- Very nicely put together Merritt son big, long and tanky with a weaning weight of 823 lbs. and a WW Ratio of 109.
- 10% in YW, 4% in ADG, 15% in MWW, 1% in CW, 10% in REA.
- Agility daughter that is well known for her cow producing genetics.



LOT 72

Hart 162A

Homozygous Black Homozygous Polled Purebred
ASA#3571164 Tattoo: 162G Birth: 2-26-19
Act. BW: 78 Adj. WW: 776 WW Ratio: 103

Hart Merritt 155B **ASR Final Sort X0151**
Hart Miss X278
Hart Miss 553Z **JAX 28X**
Hart Miss New Design 550

EPDs																
CE	BW	WW	YW	ADG	MCE	MM	MWW	STAY	DOC	CWT	YG	MARB	BF	REA	API	TI
16	3.2	75	122	.29	9	31	68	21	12.5	49.0	-.35	.05	-.093	.88	143	74
Rank		3	20	10	4	10	3	3	4	25	1			10	25	

- Merritt son that is a moderate, low set bull with added barrel and exceptional foot and bone structure and a weaning weight of 776 lbs. and a WW Ratio of 103.
- 3% in CE, 10% in YW, 4% in ADG, 10% in MCE, 3% in MILK, 3% in MWW, 4% for STAY, 1% in CW, 10% for API.
- Jax 28 female that has a WW Ratio of 4@106.



LOT 73

Hart 334A

Black Homozygous Polled Purebred
ASA#3571186 Tattoo: 334G Birth: 3-20-19
Act. BW: 76 Adj. WW: 757 WW Ratio: 101

Hart Merritt 155B **ASR Final Sort X0151**
Hart Miss X278
Hart Ms. Royalflush U658 **KWF Royal Flush M8**
Hart Lady Festus J273

EPDs																
CE	BW	WW	YW	ADG	MCE	MM	MWW	STAY	DOC	CWT	YG	MARB	BF	REA	API	TI
9	2.6	67	107	.25	5	30	63	18	9.5	35.3	-.49	-.28	-.132	.84	109	61
Rank			35	20		4	15	35		20				10		

- Young Merritt son with a lot a potential with a weaning weight of 757 lbs. and a WW Ratio of 101.
- 3% in MILK, 10% in MWW, 10% in BF.
- Royal Flush mother that has given us many fantastic bulls and females including Hart 325F to Rodney West; Hart 288Y to Dale Pitzel, and 5 very productive daughters.



Sons of JBS Single Shot 601C

Homo. Black Homo. Polled 3/4 SM 1/4 AN ASA#3029617 Tattoo: 601C Birth: 3-17-15
Gibbs 0689X Crimson Tide x JBS Miss G Design 4255

EPDs

CE	BW	WW	YW	ADG	MCE	MM	MWW	STAY	DOC	CWT	YG	MARB	BF	REA	API	TI
8	3.3	68	109	.26	3	26	60	17	9.7	49.4	-.32	.28	-.074	.94	123	69

Single Shot is a 3/4 blood Crimson Tide son that has incredibly long sided and wide based sons and daughters. They also have a lot of extension in their front end. The daughters we are calving out now have so much middle dimension with a ton of rear flank and extra hip. Their sons have big scrotal development and function to give them the necessary tools to be long lasting herd bulls.



HOMOZYGOUS
BLK
HOMOZYGOUS
PLD

LOT
74

Hart Six Shooter 371A

Homozygous Black Homozygous Polled Purebred
 ASA#3571192 Tattoo: 371G Birth: 3-29-19
 Act. BW: 85 Adj. WW: 755 WW Ratio: 100

EPDs

CE	BW	WW	YW	ADG	MCE	MM	MWW	STAY	DOC	CWT	YG	MARB	BF	REA	API	TI
8	3.0	68	106	.24	4	23	56	20	10.0	36.5	-.47	.13	-.100	1.05	131	70
Rank		25					20		20		25			10	30	

JBS Single Shot 601C

Gibbs 0689X Crimson Tide
 JBS Miss G Design 4255
 Triple C Agility U48R
 Hart Lady Contender T227

Hart Miss X692

- This is a eye catching Single Shot bull that is really soft sided and a bit more moderate with a 755 lb. weaning weight and a WW Ratio of 100
- A Contender daughter that is so complete and balanced everything we put her with is a winner. Hart Flint 145F to Keith Haag; Hart 216D to Jones Cattle; Hart 047B to Neal Vohs; and 4 beautiful females on the ranch one of which is Hart Emily 077A flush dam to the Turnpike sons.

LOT
75

Hart 149A

Homozygous Black Homozygous Polled Purebred
 ASA#3570935 Tattoo: 149G Birth: 2-22-19
 Act. BW: 83 Adj. WW: 814 WW Ratio: 108

EPDs

CE	BW	WW	YW	ADG	MCE	MM	MWW	STAY	DOC	CWT	YG	MARB	BF	REA	API	TI
8	3.1	73	117	.27	4	31	67	13	9.5	41.8	-.40	-.02	-.104	.86	112	71
Rank		30	15	10		2	3			10						

JBS Single Shot 601C

Gibbs 0689X Crimson Tide
 JBS Miss G Design 4255
 ASR Final Sort X0151
 Hart Ms. Directforce W408

Hart Miss 188B

- Nicely put together Single Shot son that is going to be a bruiser of a herd bull as he matures, has a weaning weight of 814 lbs. and a WW Ratio of 108.
- 15% in YW, 10% in ADG, 2% in MILK, 3% in MWW, 10% in CW.
- Final Sort daughter that keeps getting it done, Hart 151E to Bruley Farms LLC.

HOMOZYGOUS
BLK
HOMOZYGOUS
PLD



Hart 214A

Homozygous Black Homozygous Polled Purebred

ASA#3570914 Tattoo: 214G Birth: 3-6-19
Act. BW: 78 Adj. WW: 857 WW Ratio: 114

JBS Single Shot 601C

Gibbs 0689X Crimson Tide

Hart Miss 164B

JBS Miss G Design 425S

SKORS Black Enticer 287Y

Hart Lady Legacy T134

EPDs																
CE	BW	WW	YW	ADG	MCE	MM	MWW	STAY	DOC	CWT	YG	MARB	BF	REA	API	TI
11	1.8	72	113	.26	6	26	62	17	9.9	56.7	-.43	-.01	-.103	1.14	126	71
Rank																
		35	20	15	15		15	1				4				

- Another Single Shot bull that is dressed to impress with his amazing length of body, long spined and big back. He has a weaning weight of 857 lbs. and a WW Ratio of 114.
- 15% in ADG, 15% in MILK, 15% in MWW, 1% in CW, 4% in REA.
- Enticer young cow with a WW Ratio of 4@106, and has put 3 tremendous females here on the ranch.



Hart Buckshot 261A

Homozygous Black Homozygous Polled Purebred

ASA#3570836 Tattoo: 261G Birth: 3-11-19
Act. BW: 90 Adj. WW: 909 WW Ratio: 121

JBS Single Shot 601C

Gibbs 0689X Crimson Tide

Hart Miss 086B

JBS Miss G Design 425S

New Trend Way Cool 6W

Hart Lady Locator T288

EPDs																
CE	BW	WW	YW	ADG	MCE	MM	MWW	STAY	DOC	CWT	YG	MARB	BF	REA	API	TI
10	5.0	80	127	.30	4	29	68	14	11.1	57.2	-.45	-.07	-.106	1.21	112	71
Rank																
		10	4	2	5		2	1				2				

- This is such a performance driven individual easily converting forage as it is apparent in his massive 909 lb. weaning weight and 121 WW Ratio, this behemoth ranks 5th out of 214 bulls
- 10% in WW, 4% in YW, 2% in ADG, 5% in MILK, 2% in MWW, 1% in CW, 2% in REA.
- These Way Cool daughters are known for putting up extremely impressive calves with very massive weaning weights. She has WW Ratio of 4@103, This will be her first herd bull prospect and he certainly has some big time potential!



Hart 183A

Black Homozygous Polled Purebred

ASA#3571150 Tattoo: 183G Birth: 3-2-19
Act. BW: 87 Twin Adj. WW: 795 WW Ratio: N/A

JBS Single Shot 601C

Gibbs 0689X Crimson Tide

Hart Miss X507

JBS Miss G Design 425S

SAS T101 Sweet Meat

Hart Miss Black Ice J590

EPDs																
CE	BW	WW	YW	ADG	MCE	MM	MWW	STAY	DOC	CWT	YG	MARB	BF	REA	API	TI
6	4.5	79	120	.26	3	22	61	17	12.3	53.5	-.28	.08	-.079	.82	121	72
Rank																
		15	10	15	20		25	1				35		35		

- A twin bull out of Single Shot that also put up a very impressive weaning weight of 798 lbs.
- 15% in WW, 10% in YW, 15% in ADG, 1% in CW
- Sweet Meat dam that has had 6 natural calves with a WW Ratio of 6@100.



Sons of Hart Burbank 363D

Homo. Black Homo. Polled Purebred ASA#3117433 Tattoo: 363D Birth: 4-2-16

SVF Z47 Patch x Hart Miss Z391

EPDs																
CE	BW	WW	YW	ADG	MCE	MM	MWW	STAY	DOC	CWT	YG	MARB	BF	REA	API	TI
10	2.2	66	106	.25	6	25	58	19	8.1	33.8	-.39	-.05	-.112	.66	124	66

Burbank is a SVF Z47 Patch and Club King combo bull that we specifically kept for ourselves with the intentions of seeing what he would develop into. We had such tremendous results from Club King, and he is still in quite a bit of demand today, as his semen still flies out the Genex door. The sons that we offered in our sales were in high demand and went to some very prominent breeding programs. Burbank has everything and so much more, he has the raw power of 2 highly powerful sires all wrapped up into such a uniformly balanced frame, with muscle dimension and huge foot and leg structure.



Hart South Point 286A

Homozygous Black Homozygous Polled Purebred

ASA#3570799 Tattoo: 286G Birth: 3-14-19
Act. BW: 87 Adj. WW: 866 WW Ratio: 115

EPDs																
CE	BW	WW	YW	ADG	MCE	MM	MWW	STAY	DOC	CWT	YG	MARB	BF	REA	API	TI
9	2.6	73	114	.26	5	28	64	18	7.7	39.6	-.46	-.02	-.105	1.01	123	71
Rank		30	20	15		10	10			10				15		



SVF Z47 Patch
Hart Burbank 363D
Hart Miss X391
JF Made In American 210Z
Hart Miss 041B
Hart Miss Shamrock T18Z

- South Point is a frontrunner and continues to surpass our expectations in terms of depth, muscle development, with such a presence about him. He puts up an impressive weaning weight of 866 lbs. and with a WW Ratio of 115 and is in the top 25 bulls being produced here on the ranch.
- Top 10-15% in four traits
- A young Made In America daughter that has had really nice success with the 4 calves that she has produced, the 3 previous were some darn salty heifers that are in the herd today working hard. She has a WW Ratio of 4@105.



Hart Bankable 252A

Homozygous Black Dbl. Polled Purebred

ASA#3570945 Tattoo: 252G Birth: 3-10-19
Act. BW: 83 Adj. WW: 939 WW Ratio: 125

EPDs																
CE	BW	WW	YW	ADG	MCE	MM	MWW	STAY	DOC	CWT	YG	MARB	BF	REA	API	TI
8	2.8	83	129	.29	4	33	74	16	11.7	42.9	-.39	-.09	-.106	.83	118	75
Rank		5	3	4		1	1		35	5						20

Hart Burbank 363D SVF Z47 Patch
Hart Miss 194D Hart Miss X391
KnH Added Value 58W
NSR Ms. Tucson B53



- Can't think of anything a cattle producer would like better than a pen full of belly dragging calves that really mashes the scale down, hence makin' bank! What an impressive specimen of Patch and Club King with an impeccable weaning weight of 939 lbs. and a weaning weight ratio of 125 and ranks as our #2 bull out of 214 bulls.
- Hart Miss 194D is out of a female we purchased from Nesemeier Cattle Ranch that goes back to Hart Tucson 614Z (they purchased from our 2013 bull sale). She has a BW Ratio of 2@113 and a WW Ratio of 2@114. Some top notch performance in such a young dam. Look for great things in the years to come from her.
- 5% in WW, 3% in YW, 4% in ADG, 1% in MILK, 1% in MWW, 5% in CW.
- Super impressive birth to weaning spread.

Sons of Hart Custer 095E



Homo. Black Homo. Polled Purebred
ASA#3257097

Tattoo: 095E Birth: 2-19-17

HL Rebel 435C x
Hart Miss 106Y

Custer is a HL Rebel 435C that was sold in our 2018 sale to Shonka Farms with Hart Simmentals retaining some of the walking rights. He went way and above our grueling demands and sired a set of calves that we are very proud of. They have a lot of extra length and super dimension which allows those extra pounds to lay in effortlessly and capturing maximum performance!

EPDs																
CE	BW	WW	YW	ADG	MCE	MM	MWW	STAY	DOC	CWT	YG	MARB	BF	REA	API	TI
9	2.5	73	114	.26	5	32	69	16	10.2	38.8	-.46	.11	-.118	.88	128	75

LOT 81

Hart Big Stand 174A

Homozygous Black Homozygous Polled Purebred

ASA#3570865 Tattoo: 174G Birth: 2-28-19
Act. BW: 83 Adj. WW: 899 WW Ratio: 119

Hart Custer 095E

HL Rebel 435C

Hart Miss 106Y

Hart Miss 116Y

Hart In Time W095

Hart Miss Club King W473

EPDs																
CE	BW	WW	YW	ADG	MCE	MM	MWW	STAY	DOC	CWT	YG	MARB	BF	REA	API	TI
11	1.3	67	104	.23	6	27	61	18	12.3	27.4	-.38	.05	-.099	.65	130	70
Rank														35		

- Big backed, huge performance, stout tanky son of Custer that sets up on a great set of feet and great bone structure.
- Tremendous weaning weight of 899 lbs. and a WW Ratio of 119, ranks 10th out of 214 bulls.
- This is our favorite In Time cow that is a cut above with a BW Ratio of 7@102 and a WW Ratio of 7@104. Hart 245E to Rick and Lisa Rau and has given us 4 fancy replacements.



LOT 82

Hart Wooden Knee 307A

Homozygous Black Homozygous Polled Purebred

ASA#3571090 Tattoo: 307G Birth: 3-16-19
Act. BW: 85 Adj. WW: 795 WW Ratio: 106

Hart Custer 095E

HL Rebel 435C

Hart Miss 106Y

Hart Miss 363Z

HL Urban Legend 091U

Hart Ms. New Design T377

EPDs																
CE	BW	WW	YW	ADG	MCE	MM	MWW	STAY	DOC	CWT	YG	MARB	BF	REA	API	TI
9	2.8	70	105	.22	6	30	64	18	10.1	17.0	-.47	.14	-.102	.77	130	72
Rank														4 10 20 35 35		

- Might as well consider this Custer son a 800lb. since he is just 5lbs short of that at 795 lbs. But who is splitting hairs. He also carries a WW Ratio of 106
- Urban Legend dam that covers all the bases with a WW Ratio of 6@104 and has given us 3 beautiful uddered females to put back into production with us.



LOT 83

Hart 395A

Homozygous Black Homozygous Polled Purebred

ASA#(3570837) Tattoo: 395G Birth: 4-3-19
Act. BW: 85 Adj. WW: 780 WW Ratio: 110

Hart Custer 095E

HL Rebel 435C

Hart Miss 106Y

Hart Miss X086

Dillons In Time

Hart Lady Invasion U046

EPDs																
CE	BW	WW	YW	ADG	MCE	MM	MWW	STAY	DOC	CWT	YG	MARB	BF	REA	API	TI
9	2.9	76	114	.24	5	23	61	20	11.7	43.5	-.41	.04	-.110	.87	130	73
Rank														20 20 25 20 15 35 4 35 30		

- Custer son, moderate but deep with a weaning weight of 780 and a WW ratio of 110.
- 20% in WW, 20% in YW, 25% in ADG, 20% in MWW, 15% in STAY, 4% in CW.
- Dillons In Time dam that has a WW Ratio of 6@102.



Sons of DJF Trademark D634

Homo. Black Homo. Polled 3/4 SM 1/4 AN ASA#3145887 Tattoo: D634 Birth: 2-8-16

TJ Makers Mark 215Y x Double J Miss Z282



EPDs																
CE	BW	WW	YW	ADG	MCE	MM	MWW	STAY	DOC	CWT	YG	MARB	BF	REA	API	TI
14	1.9	93	134	.26	9	16	62	20	10.0	43.7	-.26	.08	-.050	.87	135	80

Trademark came to us in 2018 and serviced an exemplary group of heifers for us and gave us such a stellar set of calves such as Hart Benchmark 002F going to Steffan Simmentals. He calves out so effortlessly, we know with the Bolt EPDs it shows a little differently but we couldn't have asked for any better than what he did. His calves are very marketable with great extension, smooth muscle design, and extra deep rib cavity. Can't wait to see what his daughters are going to calf in a couple of weeks look like!!



Hart Tango 004G

Homozygous Black Polled/Scurred Purebred

ASA#3571052 Tattoo: 004G Birth: 1-13-19

Act. BW: 83 Adj. WW: 860 WW Ratio: 114

DJF Trademark D634

TJ Makers Mark 215Y

Double J Miss Z282

Hart Miss 316E

Welsh's Warsaw 312Z

NSR Ms. Tucson B53

EPDs																
CE	BW	WW	YW	ADG	MCE	MM	MWW	STAY	DOC	CWT	YG	MARB	BF	REA	API	TI
9	2.6	88	126	.24	5	24	68	21	10.8	49.5	-.28	.13	-.079	.79	140	82
Rank		2	5	25		30	3	10		1		25			15	4

- Super sleek looking Trademark son that is exactly on point to become a great herd sire. He is loaded chuck full of meat with a weaning weight of 860 lbs. and a WW Ratio of 114.
- 2% in WW, 5% in YW, 3% in MWW, 10% in STAY, 1% in CW, 15% in API, 4% in TI.
- Out of a Welsh's Warsaw first calf heifer that did a bang up job. Her grandam is extremely maternal giving us nothing but top notch replacement females.



Hart 148G

Homozygous Black Homozygous Polled Purebred

ASA#3571175 Tattoo: 148G Birth: 2-21-19

Act. BW: 78 Adj. WW: 785 WW Ratio: 104

DJF Trademark D634

TJ Makers Mark 215Y

Double J Miss Z282

Hart Miss 615Z

Falcks Trailhand XL2

Hart Miss X182

EPDs																
CE	BW	WW	YW	ADG	MCE	MM	MWW	STAY	DOC	CWT	YG	MARB	BF	REA	API	TI
12	2.2	86	123	.23	7	14	57	18	9.6	30.8	-.32	.09	-.066	.78	136	80
Rank		3	10	35	20						30				20	10

- Trademark herd bull prospect that is soggy made, a little bit more moderate but still very full of muscle and depth with a weaning weight of 785 and a WW Ratio of 104.
- 3% in WW, 10% in YW, 20% in MCE, 20% in API, 10% in TI.
- Trailhand daughter that has produced 4 gorgeous replacement females for us and has a WW Ratio of 4@100.



LOT 86

Hart 002A

Homozygous Black HOMOZYGOUS Polled Purebred

ASA#3570833 Tattoo: 002G Birth: 1-12-19
Act. BW: 83 Adj. WW: 786 WW Ratio: 104

EPDs																
CE	BW	WW	YW	ADG	MCE	MM	MWW	STAY	DOC	CWT	YG	MARB	BF	REA	API	TI
11	3.2	96	144	.30	7	12	60	19	10.0	47.8	-.43	.05	-.108	1.00	140	85
Rank		1	1	2	25		25	25		2				15	15	2

DJF Trademark D634

TJ Makers Mark 215Y

Double J Miss Z282

Hart Miss 084E

GLS Integrate Z3

Hart Miss 591Z

- A lanky, long sided, chunky son of Trademark that weaned off a 786 lbs. and a WW Ratio of 104, he has an impressive EPD profile and ranked very high in many attributes.
- 1% in WW, 1% in YW, 2% in ADG, 2% in CW, 15% in REA, 15% in API, 2% in TI
- A very deep, broody, soft sided soggy Integrate heifer that did a spot on job with her first calf!

LOT 87

Hart 171A

Homozygous Black HOMOZYGOUS Polled Purebred

ASA#3570969 Tattoo: 171G Birth: 2-28-19
Act. BW: 74 Adj. WW: 873 WW Ratio: 116

DJF Trademark D634

TJ Makers Mark 215Y

Double J Miss Z282

Hart Miss 215E

JS Belmont 15B

Hart Miss 312A

HOMOZYGOUS PLD

HOMOZYGOUS BLK

EPDs																
CE	BW	WW	YW	ADG	MCE	MM	MWW	STAY	DOC	CWT	YG	MARB	BF	REA	API	TI
11	2.3	84	120	.22	7	18	60	17	11.0	26.6	-.36	.13	-.072	.79	134	80
Rank		4	10		30		30						25		25	10

- This Trademark son pulls put all the bells and whistles here with his big league performance chalking up a 873 lbs. weaning weight and a WW Ratio of 116, ranked 19 out of 214 bulls born on the place. We were so impressed with Trademark's performance last year! He just up and dropped the mike this year with some of the best performance out there!
- 4% in WW, 10% in YW, 25% in MARB, 25% in API, 10% in TI.
- Huge birth to weaning spread!
- This Belmont first calf heifer is out of a Roughneck grandam that produced the bull War Cry 046F.

LOT 88

Hart Cash 170A

DbL. Black HOMOZYGOUS Polled Purebred

ASA#3571019 Tattoo: 170G Birth: 2-27-19
Act. BW: 74 Adj. WW: 861 WW Ratio: 114

DJF Trademark D634

TJ Makers Mark 215Y

Double J Miss Z282

Hart Miss 147E

BBS True Justice B10

Hart Miss 169B

EPDs																
CE	BW	WW	YW	ADG	MCE	MM	MWW	STAY	DOC	CWT	YG	MARB	BF	REA	API	TI
12	1.5	90	131	.25	7	18	63	18	9.5	46.5	-.36	.04	-.072	1.04	136	82
Rank		1	3	20	20		15			2				10	20	3

- An almost photocopy of Hart 004G with a 1lb difference in weaning weight of 861 lbs. and also a WW Ratio of 114.
- 1% in WW, 3% in YW, 20% in ADG, 20% in MCE, 15% in MWW, 2% in CW, 10% in REA, 20% in API, 3% in TI.
- Recommended heifer bull.
- Stems from a True Justice heifer that knocked it out of the park.

HOMOZYGOUS PLD



Hart 010A

Homozygous Black Homozygous Polled Purebred

ASA#3570798 Tattoo: 010G Birth: 1-15-19
Act. BW: 83 Adj. WW: 778 WW Ratio: 103

DJF Trademark D634

TJ Makers Mark 215Y

Double J Miss Z282

Hart Miss 041E

Welsh's Warsaw 312Z

Hart Miss 140C

EPDs																
CE	BW	WW	YW	ADG	MCE	MM	MWW	STAY	DOC	CWT	YG	MARB	BF	REA	API	TI
10	3.6	97	138	.26	6	9	57	18	12.1	40.4	-33	.08	-.079	.82	134	83
Rank			1	1	15				30	10	35				25	3

- Really appreciate this very balanced Trademark bull that turned in some impressive data with a weaning weight of 778lbs, and a WW Ratio of 103.
- 1% in WW, 1% in YW, 15% in ADG, 10% in CW, 3% in TI
- Another Welsh's Warsaw first calf heifer stepping up.



Hart 138A

Homozygous Black Homozygous Polled Purebred

ASA#3570998 Tattoo: 138G Birth: 2-13-19
Act. BW: 78 Adj. WW: 799 WW Ratio: 106

DJF Trademark D634

TJ Makers Mark 215Y

Double J Miss Z282

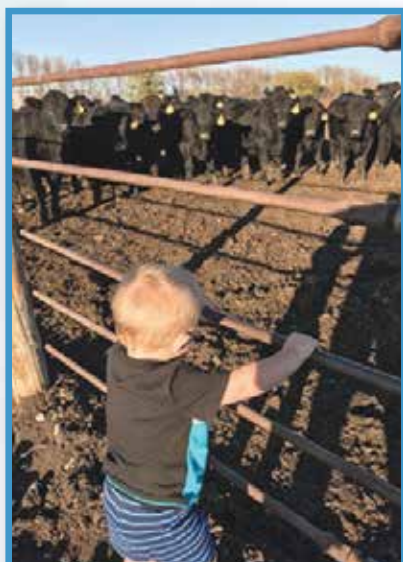
Hart Miss 246E

WCS El Dorado 5209C

Hart Sweet Sandy W311

EPDs																
CE	BW	WW	YW	ADG	MCE	MM	MWW	STAY	DOC	CWT	YG	MARB	BF	REA	API	TI
9	2.6	86	126	.25	6	22	65	18	8.8	52.1	-36	-.09	-.090	.97	121	75
Rank			3	4	20	10			1				20	20		

- A deep barreled, stout, Trademark son that comes with a weaning weight of 799lb. and a WW Ratio of 10.
- 3% in WW, 5% in YW, 20% in ADG, 10% in MWW, 1% in CW.
- His El Dorado first calf heifer has some very big shoes to fill, her grandam is the mother of Hart Genuine 038A, but we think she will do her justice!



BULL BUYER'S GUIDE

Explanation of How to Utilize API and TI Indexes

First, determine which index to use; if you're keeping replacements use API, if not, TI. Then, just as with EPDs, zero in on the unit difference between bulls. (As described to the left, index units are in dollars per cow exposed.) The difference can be used to determine how much a bull is worth compared to another. Or, put another way, how much you can pay for one bull compared to another. For example, when buying an all-purpose-type sire, you can quickly figure a bull scoring +100 for API is worth an extra \$6,000 over a \$50 bull if both are exposed to 30 cows over 4 years (\$50 diff. x 30 hd. x 4 yr. = \$6,000). A percentile-ranking chart is required to determine where a bull's index value ranks him relative to other bulls in the breed. For more information, visit www.simmental.org.

Definitions of Terms

- Expected Progeny Differences (EPDs): EPDs are the most accurate and effective tool available for comparing genetic levels.
- Back Fat (BF): Inches of backfat.
- Birth Weight (BW): Pounds of birth weight.
- Calving Ease (CE): Percent of unassisted births when used on heifers.
- Carcass Weight (CW): Pounds of carcass weight.
- Maternal Calving Ease (MCE): Percent of unassisted births in first-calving daughters.
- Milk (MLK): Pounds of weaning weight due to milk.
- Marbling (MRB): Marbling score.
- Maternal Weaning Weight (MWW): Pounds of weaning weight due to milk and growth.
- Ribeye Area (REA): Square inches of ribeye.
- Stayability (STAY): Percent of daughters remaining in the cowherd at 6 years of age.
- Terminal Index (TI): Dollars per cow exposed under a terminal-sire scenario.
- Weaning Weight (WW): Pounds of weaning weight.
- Yearling Weight (YW): Pounds of yearling weight.
- Yield Grade (YG): Yield grade score.
- All-Purpose Index (API): Dollars per cow exposed under an all-purpose-sire scenario.
- Average Daily Gain (ADG): postweaning rate of gain.
- Docility (DOC): Percentage of offspring receiving a disposition score of 1 (docile).
- Stayability (STAY): Percent of daughters remaining in the cowherd at 6 years of age.
- Terminal Index (TI): Dollars per cow exposed under a terminal-sire scenario.

OUR 3RD YEAR GIVING AWAY AN OPEN YEARLING HEIFER!

Since the inaugural inception of the opportunity to win an open heifer was conceived, we have had many breeders proclaim that they wished they had won the heifer. Our second winners, Tom and Amy Murphy were very excited to take away a heifer from our coveted females. So, it just naturally seemed like it is the right thing to do... We will continue the tradition to give away an open heifer! The same rules apply for the 2020 sale – all you have to do to be eligible to win the heifer is to purchase a bull in the 2020 sale. The more bulls you purchase the more times your name goes into the bucket. Whomever wins the heifer has the option of either keeping the heifer or they may choose the option of taking a \$2,000 rebate on the bulls that they have purchased in the sale. It is totally up to the individual that wins. GOOD LUCK!

WINNER

2019 WINNER:
TOM & AMY MURPHY

WINNER

CHICKEN DINNER



2020 HEIFER FEATURE...



Hart Ina Headturner 249G

Homozygous Black

Homozygous Polled Purebred

ASA#3570754

Tattoo: 249G Birth: 3-10-19

WBF Significant B132

Rubys Turnpike 771E

Rubys Miss Cleao 240Z

OBCC King Pin W42Y

Hart Emily 077A

Hart Miss X692

*Your Chance
to Win this
beautiful Heifer!*



HPF Right To Love 365D

Black Dbl Polled Purebred SM

ASA#3124163 Tattoo: 365D Birth: 1-11-16

HTP/SVF Duracell T52 x RP/MP Right To Love 015U

EPDs																
CE	BW	WW	YW	ADG	MCE	MM	MWW	STAY	DOC	CWT	YG	MARB	BF	REA	API	TI
12	.8	69	95	.16	7	15	50	11	4.8	29.1	-.49	.20	-.110	.91	126	75



ALF/LLFS McIntock 143F

Hetero Black Homo Polled Purebred SM

ASA#3492147 Tattoo: 143F Birth: 3-6-18

Dozer x KenCo Glamourous Top Deck

EPDs																
CE	BW	WW	YW	ADG	MCE	MM	MWW	STAY	DOC	CWT	YG	MARB	BF	REA	API	TI
10	2.5	69	100	.19	5	19	54	12	10.9	30.5	-.40	.19	-.090	.82	122	72



LRS Elevate 213B

Homo Black Homo Polled Purebred SM

ASA#2842534 Tattoo: 213B Birth: 3-5-14

Hook's Yellowstone 97Y x LRS Ms Dual Focus 213Z

EPDs																
CE	BW	WW	YW	ADG	MCE	MM	MWW	STAY	DOC	CWT	YG	MARB	BF	REA	API	TI
15	-.3	76	117	.26	8	19	57	16	-.2	24.1	-.45	.19	-.072	1.03	146	81



K-LER Franchise 804F

Homo Black Homo Polled Purebred SM

ASA#3430423 Tattoo: 804F Birth: 1-18-18

Hook's Beacon 56B x KMJ/K-LER Ms Robust D336

EPDs																
CE	BW	WW	YW	ADG	MCE	MM	MWW	STAY	DOC	CWT	YG	MARB	BF	REA	API	TI
14	-1.0	75	111	.23	9	25	62	19	10.2	42.6	-.47	.74	-.051	1.51	180	95



QB Last Frontier F42

Homo Black Homo Polled 3/4 SM 1/4 AN

ASA#3509777 Tattoo: F42 Birth: 3-5-18

CCR Frontier 0053Z x QB Ms Last Call B714

EPDs																
CE	BW	WW	YW	ADG	MCE	MM	MWW	STAY	DOC	CWT	YG	MARB	BF	REA	API	TI
4	3.2	76	117	.26	0	21	59	15	16.4	37.8	-.37	.12	-.058	1.05	108	69



Oval F Flash F833

Hetero Black Homo Polled Purebred SM

ASA#3465814 Tattoo: F833 Birth: 2-7-18

Hook's Baltic 17B x Oval F Ali A317

EPDs																
CE	BW	WW	YW	ADG	MCE	MM	MWW	STAY	DOC	CWT	YG	MARB	BF	REA	API	TI
11	2.3	80	123	.27	5	23	62	21	14.1	37.4	-.34	.46	-.089	.73	162	86

Selling 90 Purebred Simmental Bulls

HART SIMMENTALS POWER BULL SALE

This sale will be broadcast live on the internet! **DVAuction** Broadcasting Real-Time Auctions



*Thursday, February 6, 2020 • 12:00 Noon Sharp
At the farm 2 miles south of Frederick, SD*



PROUDLY HOSTING OUR 45TH ANNUAL SALE!

ALL BULLS
SELLING
WERE BRED,
BORN AND
DEVELOPED
HERE ON THE
RANCH NEAR
FREDERICK!

 **Eberspacher Ent. Inc.**
2904 County Road 6
Marshall, MN 56258

First Class Mail: Time Dated Material!

Presorted
First Class
US Postage
PAID
SlateGroup

FIRST CLASS
MAIL
U.S. POSTAGE
PAID
MN MAIL